

**Vent Length with Support Plate**

**Purpose:**

- The purpose of the Vent Length with Support Plate is to provide an anchor point at the bottom of a vertical run or an additional way to brace a horizontal run.

**Installation:**

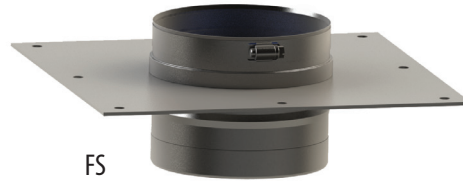
- Always follow appliance manufacturer’s installation instructions for proper appliance setup and venting requirements.
- Refer to the FasNSeal & W2 Installation Instructions for correct installation to FasNSeal vent lengths and adapters.
- Use at the bottom most section of a vertical run.

Maximum Chimney Height in Feet for Vent Length with Support Plate

Dia	Order #	Stock #	F5 Vent Length with Support Plate
3"	FSSP3	810013336	200
4"	FSSP4	810013337	200
5"	FSSP5	810014720	195
6"	FSSP6	810012891	190
7"	FSSP7	810012892	185
8"	FSSP8	810012893	180
9"	FSSP9	810012894	175
10"	FSSP10	810012895	170
12"	FSSP12	810012896	160
14"	FSSP14	810012897	150
16"	FSSP16	810012898	140

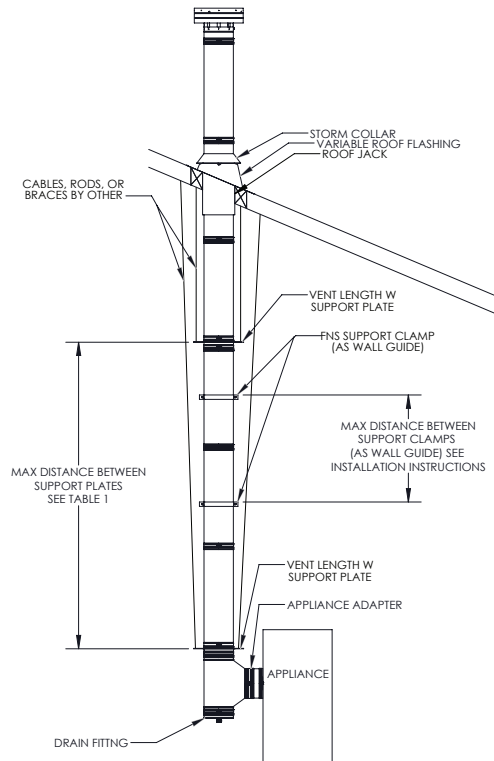
Dia	Order #	Stock #	W2 Vent Length with Support Plate
3"	W2-SP3	810014721	100
4"	W2-SP4	810014722	100
5"	W2-SP5	810014723	97.5
6"	W2-SP6	810012899	95
7"	W2-SP7	810012900	92.5
8"	W2-SP8	810012901	90
9"	W2-SP9	810012902	87.5
10"	W2-SP10	810012903	85
12"	W2-SP12	810012904	80
14"	W2-SP14	810012905	75
16"	W2-SP16	810012906	70



F5



W2



For current pricing and availability, please call customer service at (800) 835-4429.

Information published in all M&G DuraVent bulletins is current at time of publication and is subject to change without notice.