

NOW AVAILABLE Harman Appliance Adapter for PelletVent Pro!

Working with our Installers, DuraVent determined there is a need to offer a new version of our adapters for the **Harman Pellet Stove**. DuraVent has created two new adapters that will make the installation of Pellet Vent Pro easier and installer friendly. The two adapters have an anchor plate built into the base with a matching hole pattern for the Harman Stove. This allows the installer to remove the existing factory outlet and replace it with either the 3PVP-ADH-SC1 or 3PVP-ADH-SC2 adapter. The removal and replacement of the factory outlet has been approved by Harman Stoves.

Both adapters have the PVP twist-lock to make PVP connection simple and easy.

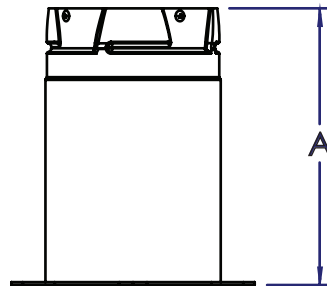
Some stoves have a hopper that prevents the installer from clearing the back of the stove with a tee right off the outlet. The 3PVP-ADH-SC1 gives the additional length needed to clear the pellet hopper and to go to vertical with a tee, allowing the stove to be placed closer to the wall. There is no need to use an additional horizontal pipe length.

If you need to use 4" diameter vent you simply attach either a standard 3PVP-X4 3"x4" increaser or a 3PVP-TADX41 Increaser Tee to convert to a 4" diameter system.

The current 3PVP-ADHB and 3PVP-X4ADHB's still work when connecting to the factory supplied outlet and will be continued to be supplied.

Our goal is to make installations as easy and fast as possible. This improvement is part of that commitment.

DESCRIPTION	Harman Pellet Appliance Adapter - Long	Harman Pellet Appliance Adapter - Short
A	5 3/4"	2 1/8"
ORDER #	3PVP-ADH-SC1	3PVP-ADH-SC2
STOCK #	810016995	810016996



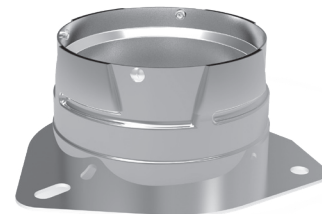
3PVP-ADH-SC1:

Use on Harman Appliance with extended hoppers on the back.



3PVP-ADH-SC2:

Use on Harman Appliance to minimize distance from the wall.



For current pricing and availability, please call customer service at (800) 835-4429.

Information published in all DuraVent bulletins is current at time of publication and is subject to change without notice.