

**duravent**<sup>™</sup>

## **DuraSeal**<sup>®</sup>

Single-Wall and Double-Wall Special Gas Vent  
**Boiler Adapters**



**AV**

APPLIANCE MANUFACTURER	MODEL V1	DSD ADAPTER CODE	DS ADAPTER CODE	Page
*** If you are unable to find a model or have any questions or comments, please contact our Customer Service Department.				
<b>A.O SMITH WATER PRODUCTS</b>	Conservationist BPD / BTF-80	DSD3PVCUK	DS3PVCU	N/A
	Conservationist BT-60, 80, 100	DSD4UNIBAOUK	DS4UNIBAOU	19
	Cyclone BTH-120, 150, 199, 250	DSD3PVCUK	DS3PVCU	N/A
	Cyclone BTH-300, 400, 500	DSD4PVCUK	DS4PVCU	30
	Cyclone BTX-80, 100	DSD3PVCUK	DS3PVCU	N/A
	Cyclone BTXL-100	DSD3PVCUK	DS3PVCU	N/A
	Genesis GB & GW - 200	DSD4UNIBAUK	DS4UNIBAUK	19
	GB & GW - 300	DSD5UNIBAUK	DS5UNIBAUK	19
	GB & GW - 400 & 500	DSD6UNIBAUK	DS6UNIBAUK	19
	GB & GW - 650 & 750	DSD8UNIBAUK	DS8UNIBAUK	19
	GB & GW 1000	DSD10UNIBAUK	DS10UNIBAUK	19
	GB & GW 1300 & 1500	DSD12UNIBAUK	DS12UNIBAUK	19
	GB & GW 1850 & 2100	DSD14UNIBAUK	DS14UNIBAUK	19
	GB & GW 2500	DSD16UNIBAUK	DS16UNIBAUK	19
	Legend 2000 LB & LW 500 - 750	DSD6HFFUK	DS6HFFU	27
	LB & LW 1000	DSD7HFFUK	DS7HFFU	27
	Master-Fit BTR-120	DSD5UNIBAOUK or DSDUNIBAOUK	DS5UNIBAOU or DS6UNIBAOU	19
	Master-Fit BTR-250, 251, 275, 500	DSD6UNIBAOUK or DSD8UNIBAOUK	DS6UNIBAOU or DS8UNIBAOU	19
	Master-Fit BTR-154, 180, 197, 198, 199	DSD6UNIBAOUK	DS6UNIBAOU	19
	Master-Fit BTR-200, 305, 365, 400	DSD8UNIBAOUK	DS8UNIBAOU	19
	Polaris BDS 130, 150	DSD3PVCUK	DS3PVCU	N/A
	Polaris BTS 130, 150, 175, 199	DSD3PVCUK	DS3PVCU	N/A
	Pro Star XT 19400	DSD4UNIBAOUK	DS4UNIBAOU	19
	ATI 705	DSD4UNIBAOUK	DS4UNIBAOU	19
	Powered Burner BTP-150-140 to 720	DSDøUNIBAOUK	DSøUNIBAOU	19
	Powered Burner BTP-200-300 to 1500	DSDøUNIBAOUK	DSøUNIBAOU	19
	XWH-150, 200	DSD3PVCUK	DS3PVCU	N/A
	XWH-285, 400, 500, 600	DSD4PVCUK	DS4PVCU	30
	XWH-700, 800, 1000	DSD6PVCUK	DS6PVCU	30
	XWH-1300, 1700, 2000, 2600	DSD8PVCUK	DS8PVCU	30
	XWH-3400	DSD10MM251UK	DS10MM251U	34
	VWH0500 (CAT IV)	DSD4UNIBAOUK	DS4UNIBAOU	19
	VWH0750 (CAT IV)	DSD5UNIBAOUK	DS5UNIBAOU	19
	VWH1000, 1500 (CAT IV)	DSD6UNIBAOUK	DS6UNIBAOU	19
	VWH2000 (CAT IV)	DSD8UNIBAOUK	DS8UNIBAOU	19
	VWH0500 (CAT II; Increaser Supplied by Manufacturer)	DSD7UNIBAOUK	DS7UNIBAOU	19
	VWH0750 (CAT II; Increaser Supplied by Manufacturer)	DSD9UNIBAOUK	DS9UNIBAOU	19
	VWH1000 (CAT II; Increaser Supplied by Manufacturer)	DSD10UNIBAOUK	DS10UNIBAOU	19
	VWH1500 (CAT II; Increaser Supplied by Manufacturer)	DSD8UNIBAOUK	DS8UNIBAOU	19
	VWH2000 (CAT II; Increaser Supplied by Manufacturer)	DSD10UNIBAOUK	DS10UNIBAOU	19
GWH-400, 500	DSD6UNIBAOUK	DS6UNIBAOU	19	
GWH-650, 750	DSD8UNIBAOUK	DS8UNIBAOU	19	

APPLIANCE MANUFACTURER	MODEL V1	DSD ADAPTER CODE	DS ADAPTER CODE	Page
*** If you are unable to find a model or have any questions or comments, please contact our Customer Service Department.				
<b>A.O SMITH WATER PRODUCTS</b> (continued)	GWH-1000	DSD10UNIBAOUK	DS10UNIBAOU	19
	GWH-1250, 1450	DSD12UNIBAOUK	DS12UNIBAOU	19
	GWH-1800, 2100	DSD14UNIBAOUK	DS14UNIBAOU	19
<b>AERCO International</b>	KC1000	DSD6AERKCUK	DS6AERKCU	20-21
	AM 399, 500	DSD4PVCUK	DS4PVCU	30
	AM 750, 1000	DSD6PVCUK	DS6PVCU	30
	Benchmark BMK 1.5	DSD6AERBMKUK	DS6AERBMKU	20
	Benchmark BMK 2.0, BMK 3.0	DSD8AERBMKUK	DS8AERBMKU	20
	Benchmark BMK 750, 1000, 1500	DSD6AERBMKUK	DS6AERBMKU	20
	Benchmark BMK 2000, 2500, 3000	DSD8AERBMKUK	DS8AERBMKU	20
	Benchmark BMK 5000, 6000	DSD14AERBMKUK	DS14AERBMKU	20
	Benchmark BMK 5000, 6000 with 12" Vent	DSD12AERBMKOFFUK	DS12AERBMKOFFU	20
	Benchmark BMK EXCENTRIC	DSD12AERBMKOFFUK	DS12AERBMKOFFU	20
	BMK 4000/5000N	DSD12AERBMKUK	DS12AERBMKUK	20
	Esteem 399	DSD4PVCUK	DS4PVCU	30
	Innovation 600/800/1060/1350	DSD6AERBMKUK	DS6AERBMKU	20
	MFC 3000, 4000, 5000	DSD12AERMFC4000UK	DS12AERMFC4000U	N/A
	MFC 6000	DSD14AERMFC6000UK	DS14AERMFC6000U	N/A
	MFC 8000, 10000	DSD16AERMFC8000UK	DS16AERMFC8000U	N/A
	Modulex MLX-303 to MLX-606	Standard Venting	Standard Venting	N/A
	Modulex MLX-757 to MLX-1061	Standard Venting	Standard Venting	N/A
	Modulex MLX EXT 321/481/691	DSD4AERMLXUK	DS4AERMLXU	21
	Modulex MLX EXT 641/802/962/1124	DSD6AERMLXUK	DS6AERMLXU	21
	Modulex MLX EXT 1530/1912	DSD10AERMLXUK	DS10AERMLXU	21
	Modulex MLX EXT 2295/2677/3060	DSD12AERMLXUK	DS12AERMLXU	21
	Recon 500, 1000	DSD6AERBMKUK	DS6AERBMKU	20
<b>AJAX</b>	Atlas Goldstar GS - 10 - A01G	DSD6HFFUK	DS6HFFU	27
	Atlas Goldstar GS - 15 - A01G	DSD8HFFUK	DS9HFFU	27
	Atlas A050, A075	DSD6UNIBAOUK	DS6UNIBAOU	19
	Atlas A100 / A150	DSD8UNIBAOUK	DS8UNIBAOU	19
	Atlas A200	DSD10UNIBAOUK	DS10UNIBAOU	19
	Atlas A250 / A300	DSD12UNIBAOUK	DS12UNIBAOU	19
	Ace Series	DSD0UNIBAOUK	DS0UNIBAOU	19
	AJAX SERIES	DSD0UNIBAOUK	DS0UNIBAOU	19
	Goldstar GS-10-A01G	DSD6HFFUK	DS6HFFU	27
	Goldstar GS-15-A01G	DSD8HFFUK	DS8HFFU	27
<b>AMERICAN</b>	GT - 705I	DSD4UNIBAOUK	DS4UNIBAOU	19
<b>ARRAY</b>	AR1000, AR1500, AR2000	DSD6MM161UK	DS6MM161U	34
	AR3000, AR4000	DSD8MM201UK	DS8MM201U	34
	AR3000, AR4000	DSD10MM251UK	DS10MM251U	34
<b>BARD MFG.</b>	IH, IC, IL, ISG & MPG Gas Furnaces	DSD4UNIBAU	DS4UNIBAU	19

APPLIANCE MANUFACTURER	MODEL V1	DSD ADAPTER CODE	DS ADAPTER CODE	Page
*** If you are unable to find a model or have any questions or comments, please contact our Customer Service Department.				
<b>BEACON MORRIS</b>	BRU, BRU30 to 90, BYU 30 to 90	DSD4UNIBAOUK	DS4UNIBAOU	19
	BRU / BTU 100 / 250	DSD5UNIBAOUK	DS5UNIBAOU	19
	BRU / BTU 300 / 400	DSD6UNIBAOUK	DS6UNIBAOU	19
	BST 30 - 75	DSD4UNIBAOUK	DS4UNIBAOU	19
	BM Series - ALL	DSD4UNIBAOUK	DS4UNIBAOU	19
	BM Series - ALL	DSD5UNIBAOUK	DS5UNIBAOU	19
	BM Series - ALL	DSD6UNIBAOUK	DS6UNIBAOU	19
<b>BOSCH / BUDERUS</b>	AQUASTAR 125FX	DSD4UNIBAOUK	DS4UNIBAOU	19
	AQUASTAR 240FX	DSD4UNIBAOUK	DS4UNIBAOU	19
	GWH 425EF	DSD4UNIBAOUK	DS4UNIBAOU	19
	G315	DSD7UNIBAOUK	DS7UNIBAOU	19
	G515	DSD10UNIBAOUK	DS10UNIBAOU	19
	G615	DSD14UNIBAOUK	DS14UNIBAOU	19
	GB142	DSD3PVCUK	DS3PVCU	N/A
	GB162	DSD4PVCUK	DS4PVCU	30
	GB312-90, 120, 160			N/A
	GB312-320, 240, 280	DSD8MM197UK	DS8MM197U	34
	DSB255	DSD3PVCUK	DS3PVCU	N/A
	DSB399, 512	DSD4PVCUK	DS4PVCU	30
	SB625WS-160 and -200	DSD8BOSCHUK	DS8BOSCHU	22
	SB625WS-290 and -370	DSD10BOSCHUK	DS10BOSCHU	22
	SB625WS-480 and -640	DSD12BOSCHUK	DS12BOSCHU	22
	SB625WS-800 and -1050	DSD14BOSCHUK	DS14BOSCHU	22
	SB625WS-1300	DSD16BOSCHUK	DS16BOSCHU	22
	SB625WS-1550	DSD18BOSCHUK	DS18BOSCHU	22
<b>BRYAN</b>	TRIPLE FLEX	DSD8BRYANTFU	DS8BRYANTFU	23
<b>BUDERUS</b>	GA244 62	DSD4UNIBAOUK	DS4UNIBAOU	19
	G315	DSD7UNIBAOUK	DS7UNIBAOU	19
	G515	DSD10UNIBAOUK	DS10UNIBAOU	19
	G615	DSD14UNIBAOUK	DS14UNIBAOU	19
	SB615 - 145 / 185	DSD6UNIBAU	DS6UNIBAU	19
	SB615 - 240 / 310	DSD8UNIBAU	DS8UNIBAU	19
	SB615 - 400	DSD10UNIBAU	DS10UNIBAU	19
	SB615 - 510 / 640	DSD12UNIBAU	DS12UNIBAU	19
	SB - 735 / 970 / 1200	DSD14UNIBAU	DS14UNIBAU	19
	G124X 18 & 25	DSD5UNIBAOUK	DS5UNIBAOU	19
	G124X 32	DSD6UNIBAOUK	DS6UNIBAOU	19
	G234X 38 / 45 / 55	DSD7UNIBAOUK	DS7UNIBAOU	19
	G234X 64	DSD8UNIBAOUK	DS8UNIBAOU	19
	G334X 73	DSD8UNIBAOUK	DS8UNIBAOU	19
	G334X 92	DSD9UNIBAOUK	DS9UNIBAOU	19
	G334X 116 / G334X 132	DSD10UNIBAOUK	DS10UNIBAOU	19
	GB 162 - 80 / 100	DSD4PVCUK	DS4PVCU	30
	GB 312 - 90 / 120 / 160	DSD6PVCUK	DS6PVCU	30
	GB 312 - 200 / 240 / 280	DSD8PVCUK	DS8PVCU	30
	GC 124 / 3 & 4	DSD5UNIBAOUK	DS5UNIBAOU	19

APPLIANCE MANUFACTURER	MODEL V1	DSD ADAPTER CODE	DS ADAPTER CODE	Page
*** If you are unable to find a model or have any questions or comments, please contact our Customer Service Department.				
<b>BUDERUS</b> (continued)	GC 124 / 5	DSD6UNIBAOUK	DS6UNIBAOU	19
<b>BURNHAM / US BOILERS</b>	CHG 225	Standard Venting	Standard Venting	N/A
	SCG-8 / SCG-9	DSD4HFFUK	DS4HFFU	27
	ALPINE 80B, 105B, 210B	DSD3PVCUK	DS3PVCU	N/A
	ALPINE 258B, 399, 399C, 500C	DSD4PVCUK	DS4PVCU	30
	ALPINE 600C, 700C, 800C	DSD6PVCUK	DS6PVCU	30
	K2WT-080, 100, 120, 150, 180	DSD3PVCUK	DS3PVCU	N/A
	K2FT-085, 110, 155, 205, 270	DSD3PVCUK	DS3PVCU	N/A
	X-C080, 100, 120, 150, 180	DSD3PVCUK	DS3PVCU	N/A
	PVG-8 / PVG-9	DSD4HFFUK	DS4HFFU	27
	V11 SERIES	DSD8UNIBAOUK	DS8UNIBAOU	19
	V11 SERIES	DSD10UNIBAOUK	DS10UNIBAOU	19
	V11 SERIES	DSD12UNIBAOUK	DS12UNIBAOU	19
	V11 SERIES	DSD14UNIBAOUK	DS14UNIBAOU	19
	V11 SERIES	DSD16UNIBAOUK	DS16UNIBAOU	19
	V11 SERIES	DSD18UNIBAOUK	DS18UNIBAOU	19
<b>CAMUS</b>	Advantus 500, 600	DSD5UNIBAOUK	DS5UNIBAOU	19
	Advantus 800, 1000	DSD6UNIBAOUK	DS6UNIBAOU	19
	Advantus 1200, 1400	DSD7UNIBAOUK	DS7UNIBAOU	19
	Advantus 1600, 1800	DSD8UNIBAOUK	DS8UNIBAOU	19
	Advantus 2000, 2500	DSD9UNIBAOUK	DS9UNIBAOU	19
	Advantus 3000, 3500, 4000	DSD10UNIBAOUK	DS10UNIBAOU	19
	Dynaflame 0500	DSD4DYNAFLAMEUK	N/A	35
	Dynaflame 0750, 1100, 1200	DSD4DYNAFLAMEUK	N/A	35
	Dynaflame 1500, 1750	DSDØUNIBAOUK (7", 10", 12")	DSØUNIBAOU (7", 10", 12")	19
	Dynaflame 2000, 2500, 3000	DSDØUNIBAOUK (8", 12", 14")	DSØUNIBAOU (8", 12", 14")	19
	Dynaflame 3500, 4000	DSDØUNIBAOUK (9", 14", 16")	DSØUNIBAOU (9", 14", 16")	19
	Dynaflame 4500, 4504, 5000, 5004	DSDØUNIBAOUK (10", 14", 16")	DSØUNIBAOU (10", 14", 16")	19
	Dynaflame 6004	DSDØUNIBAOUK (12", 14", 16")	DSØUNIBAOU (12", 14", 16")	19
	Dynaflame 0501, 0502	DSDØUNIBAOUK (4", 5", 6")	DSØUNIBAOU (4", 5", 6")	19
	Dynaflame 0751, 0752	DSDØUNIBAOUK (6", 8")	DSØUNIBAOU (6", 8")	19
	Dynaflame 1101, 1102, 1201, 1202	DSDØUNIBAOUK (6", 7", 8")	DSØUNIBAOU (6", 7", 8")	19
	Dynaflame 1501, 1502, 1751, 1752	DSDØUNIBAOUK (7", 8", 10")	DSØUNIBAOU (7", 8", 10")	19
	Dynaflame 2001, 2002, 2501, 2502	DSDØUNIBAOUK (8", 9", 12")	DSØUNIBAOU (8", 9", 12")	19
	Dynaflame 3001, 3002	DSDØUNIBAOUK (8", 10", 12")	DSØUNIBAOU (8", 10", 12")	19
	Dynaflame 3501, 3502, 4001, 4002	DSDØUNIBAOUK (9", 12", 14")	DSØUNIBAOU (9", 12", 14")	19

APPLIANCE MANUFACTURER	MODEL V1	DSD ADAPTER CODE	DS ADAPTER CODE	Page	
*** If you are unable to find a model or have any questions or comments, please contact our Customer Service Department.					
CAMUS (continued)	Dynaflame 4501, 4502, 4514, 4524, 5001, 5002, 5014, 5024	DSDØUNIBAOUK (10", 12", 14")	DSØUNIBAOU (10", 12", 14")	19	
	Dynaflame 6014, 6024	DSDØUNIBAOUK (12", 14")	DSØUNIBAOU (12", 14")	19	
	Dynaforce DR300, 350, 400	DSD4BTCAMUSUK+ DSD4UNIBAOMUK		23	
	Dynaforce DR500, 600	DSD5BTCAMUSUK+ DSD5UNIBAOMUK		23	
	Dynaforce DR800, 1000	DSD6BTCAMUSUK+ DSD6UNIBAOMUK		23	
	Dynaforce DR1200, 1400, 1600	DSD7BTCAMUSUK+ DSD7UNIBAOMUK		23	
	Dynaforce DR1800, 2000	DSD8BTCAMUSUK+ DSD8UNIBAOMUK		23	
	Dynaforce DR2500, 3000	DSD9BTCAMUSUK+ DSD9UNIBAOMUK		23	
	Dynaforce DR3500, 4000	DSD10CAMUSUK+ DSD10UNIBAOMUK		23	
	Dynaforce DR4500, 5000	DSD12CAMUSUK+ DSD12UNIBAOMUK		23	
	Dynamax HS 0081,0082, 0083, 0101, 0102, 0103, 0151, 0152, 0153, 0201, 0202, 0203	DSD3PVCUK	DS3PVCU	N/A	
	"Dynamax HS 0211, 0212, 0213	DSDØPVCUK (3", 4")	DSØPVCU (3", 4")	30	
	"Dynamax HS 0251, 0252, 0253	DSD3PVCUK	DS3PVCU	30	
	"Dynamax HS 0261, 0262, 0263	DSDØPVCUK (3", 4")	DSØPVCU (3", 4")	30	
	"Dynamax HS 0291, 0292, 0293, 0391, 0392, 0393	DSDØPVCUK (3", 4", 5")	DSØPVCU (3", 4", 5")	30	
	Dynamax HS 0501, 0502, 0503, 0601, 0602, 0603	DSDØPVCUK (3", 4", 6")	DSØPVCU (3", 4", 6")	30	
	Dynamax HS 0701, 0702, 0703	DSDØPVCUK (4", 6", 7")	DSØPVCU (4", 6", 7")	30	
	Dynamax HS 0801, 0802, 0803	DSDØPVCUK (5", 6", 7")	DSØPVCU (5", 6", 7")	30	
	TH Series 082, 102, 152, 202, 252	DSD3PVCUK	DS3PVCU		
	TH Series 292, 392, 502	DSDØPVCUK (3", 4")	DSØPVCU (3", 4")	30	
	MicroFlame Series 60, 100, 150	DSD3UNIBAOUK	DS3UNIBAOU	19	
	MicroFlame Series 200, 250	DSD3UNIBAOUK	DS4UNIBAOU	19	
	MicroFlame Series 300, 400	DSD5UNIBAOUK	DS5UNIBAOU	19	
	MicroFlame Series 500, 600	DSD6UNIBAOUK	DS6UNIBAOU	19	
	MicroFlame Series 2 800, 1000	DSD8UNIBAOUK	DS8UNIBAOU	19	
	MicroFlame Series 2 1200, 1400	DSD10UNIBAOUK	DS10UNIBAOU	19	
	MicroFlame Series 2 1600, 1800, 2000	DSD12UNIBAOUK	DS12UNIBAOU	19	
	MicoFlame Grande Series 2012	DSD12UNIBAOUK	DS12UNIBAOU	19	
	MicoFlame Grande Series 2502, 3002	DSD14UNIBAOUK	DS14UNIBAOU	19	
	MicoFlame Grande Series 3502, 4002	DSD16UNIBAOUK	DS16UNIBAOU	19	
	CAREL HUMIDIFIERS	UG150 (1 x adapter)	N/A	DS3ADUGU	35
		UG300 (2 x adapters)	N/A	DS3ADUGU	35
UG450 (3 x adapters)		N/A	DS3ADUGU	35	
CLEAVER-BROOKS	CLEARFIRE MCF-750	DSD6UNIBAOUK	DS6UNIBAOU	19	
	CLEARFIRE MCF-1000	DSD8UNIBAOUK	DS8UNIBAOU	19	
	CLEARFIRE MCF-1500	DSD10UNIBAOUK	DS10UNIBAOU	19	
	CLEARFIRE MCF-1800	DSD12UNIBAOUK	DS12UNIBAOU	19	



APPLIANCE MANUFACTURER	MODEL V1	DSD ADAPTER CODE	DS ADAPTER CODE	Page
*** If you are unable to find a model or have any questions or comments, please contact our Customer Service Department.				
<b>CLEAVER-BROOKS</b> (continued)	FLX 150, 200, 250	DSD10UNIBAOUK	DS10UNIBAOU	19
	FLX 300, 350	DSD12UNIBAOUK	DS12UNIBAOU	19
	FLX 400, 450, 500, 550, 600	DSD16UNIBAOUK	DS16UNIBAOU	19
	CLEARFIRE CFC-500, 750	DSD6UNIBAOUK	DS6UNIBAOU	19
	CLEARFIRE CFC-1000	DSD8UNIBAOUK	DS8UNIBAOU	19
	CLEARFIRE CFC-1500	DSD10UNIBAOUK	DS10UNIBAOU	19
	CLEARFIRE CFC-1800, 2500, 3300	DSD12UNIBAOUK	DS12UNIBAOU	19
	CLEARFIRE CFLC-4000, 5000	DSD14FFAUK	DS14FFAU	N/A
	CLEARFIRE CFLC-6000, 8000	DSD16FFAUK	DS16FFAU	N/A
	CLEARFIRE CFLC-10000, 12000	DSD20FFAUK	DS20FFAU	N/A
	CLEARFIRE CFCE-750, 1000	DSD6UNIBAOUK	DS6UNIBAOU	19
	CLEARFIRE CFCE-1500, 2000	DSD8UNIBAOUK	DS8UNIBAOU	19
	CLEARFIRE MCF-750	DSD6UNIBAOUK	DS6UNIBAOU	19
	CLEARFIRE MCF-1000	DSD8UNIBAOUK	DS8UNIBAOU	19
	CLEARFIRE MCF-1500	DSD10UNIBAOUK	DS10UNIBAOU	19
	CLEARFIRE MCF-1800	DSD12UNIBAOUK	DS12UNIBAOU	19
<b>COLUMBIA BOILER</b>	CDV 150 thru CDV200	DSD4UNIBAOUK	DS4UNIBAOU	19
	LVGD 90 / 120	DSD4UNIBAUK	DS4UNIBAU	19
<b>CROWN BOILER</b>	BALI BWF-061, 095, 128, 162	DSD3UNIBAUK	DS3UNIBAU	19
	BALI BWF 195, 229	DSD4UNIBAUK	DS4UNIBAU	19
	BIMINI BWC-150		Standard ø3" pipe length	19
	BIMINI BWC-225		Standard ø4" pipe length	19
	BIMINI BWC-300	DSD4HFFUK	DS4HFFU	27
	BIMINI BWC-399, 425	DSD5HFFUK	DS5HFFU	27
	CABO CSC-050, 150			N/A
	CABO CSC-175, 200	DSD4UNIBAUK	DS4UNIBAU	19
	CABO II CWD060-245			N/A
	CXE-6 / CXE-7	DSD4UNIBAUK	DS4UNIBAU	19
	XE SERIES -- XE-2 THRU XE-5	DSD4UNIBAOUK	DS4UNIBAOU	19
<b>DEDIETRICH</b>	C230 ECO-A-80, 120, 160, 200	DSD6DDRC230UK	DS6DDRC230U	24
	C310 ECO-A-5, -6, -7, -8, -9	DSD10DDRC310UK	DS10DDRC310U	24
	GT120	DSD4UNIBAOUK	DS4UNIBAOU	19
	GT 210A - GT 214A, 215A	DSD6UNIBAOUK	DS6UNIBAOU	19
	GT 210A - GT 216A, 217A, 218A	DSD7UNIBAOUK	DS7UNIBAOU	19
	GT 300A - GT 304A, 305A, 306A	DSD7UNIBAOUK	DS7UNIBAOU	19
	GT 300A - GT 307A, 308A, 309A	DSD8UNIBAOUK	DS8UNIBAOU	19
	GT 400A - GT 408A, 409A, 410A	DSD10UNIBAOUK	DS10UNIBAOU	19
	GT 400A - GT 411A, 412A, 413A, 414A	DSD12UNIBAOUK	DS12UNIBAOU	19
	GT 500A - GTE 515A, 516A, 517A, 518A, 519A, 520A	DSD12UNIBAOUK	DS12UNIBAOU	19
	GT 500A - GTE 522A, 523A, 524A, 525A	DSD18UNIBAOUK	DS18UNIBAOU	19
	GT334A, GT335A, GT336A	DSD7UNIBAOUK	DS7UNIBAOU	19
	GT337A, GT338A, GT339A	DSD8UNIBAOUK	DS8UNIBAOU	19

APPLIANCE MANUFACTURER	MODEL V1	DSD ADAPTER CODE	DS ADAPTER CODE	Page
*** If you are unable to find a model or have any questions or comments, please contact our Customer Service Department.				
<b>DEDIETRICH</b> (continued)	GT430-8A to GT430-10A	DSD10UNIBAOUK	DS10UNIBAOU	19
	GT430-11A to GT430-14A	DSD12UNIBAOUK	DS12UNIBAOU	19
	GT 330A Series; GT 334A, 335A, 336A	DSD7UNIBAOUK	DS7UNIBAOU	19
	GT 330A Series; GT 337A, 338A, 339A	DSD8UNIBAOUK	DS8UNIBAOU	19
	GT 430A Series; GT 430-8A, -9A, -10A	DSD10UNIBAOUK	DS10UNIBAOU	19
	GT 430A Series; GT 430-11A, -12A, -13A, -14A	DSD12UNIBAOUK	DS12UNIBAOU	19
	GT 530A-15, -16, -17, -18, -19, -20, -21	DSD16UNIBAOUK	DS16UNIBAOU	19
	GT 530A-22, -23, -24, -25	DSD18UNIBAOUK	DS18UNIBAOU	19
	GT 530AE-26, -27, -28, -30, -31, -32	DSD20UNIBAOUK	DS20UNIBAOU	19
	GT 530A Plus-15, -16, -17, -18, -19, -20	DSD16UNIBAOUK	DS16UNIBAOU	19
	GT 530A Plus-21, -22, -23, -24, -25	DSD18UNIBAOUK	DS18UNIBAOU	19
	GT 530AE Plus-26, -27, -28, -30, -31, -32	DSD20UNIBAOUK	DS20UNIBAOU	19
	GAS 230	DSD6DDRC230UK	DS6DDRC230U	24
	GAS 310	DSD10DDRC310UK	DS10DDRC310U	24
<b>DUNKIRK RADIATOR</b>	XEB-2 thru XEB-7	DSD4UNIBAUK	DS4UNIBAU	19
<b>DURAVENT</b>	FasNSeal Double Wall Male	DSDØHF Muk	DSØHF MU	27
	FasNSeal Double Wall Female	DSDØFFNSAUK	DSØFFNSAU	24-25
	FasNSeal Double Wall Female with 1/2 FNPT	DSDØFFNSTP1/2UK	DSØFFNSTP1/2U	25
	FasNSeal Single Wall Male	DSDØHF Muk	DSØHF MU	27
	FasNSeal Single Wall Female	DSDØFFNSAUK	DSØFFNSAU	24-25
	FasNSeal Single Wall Female with 1/2 FNPT	DSDØFFNSTP1/2UK	DSØFFNSTP1/2U	25
	PolyPro Female		DSØPOLYPROFAU	25
	PolyPro Male		DSØPOLYPROMAU	25
<b>FRIGIDAIRE</b>	see NORDYNE			N/A
<b>FULTON BOILER</b>	EDR+ 2000/3000, 4000 & 5000/6000	DSD5.7FEDR8UK DSD5.7FEDR8BK DSD12FEDRUK DSD12FEDRBK DSD14FEDRUK DSD14FEDRBK	DS5.7FEDR8U DS5.7FEDR8B DS12FEDRU DS12FEDRB DS14FEDRU DS14FEDRB	35
	Endura EDR 750, 1000, 1500	DSD6FEDRUK	DS6FEDRU	26
	Endura EDR 2000	DSD8FEDRUK	DS8FEDRU	26
	Endura EDR+2000, +3000	DSD8FFNSAU if 8100013180 is ordered from Fulton	DS8FFNSAU if 8100013180 is ordered from Fulton	24-25
	Pulse PHW 2000	DSD6FULTUK	DS6FULTU	26
	Pulse PHW 300, 500, 750, 1000, 1400	DSD4FULTUK	DS4FULTU	26
	Pulse PDWH 750, 1000	DSD4FULTUK	DS4FULTU	26
	Pulse PVLP 750, 1150	DSD4FULTUK	DS4FULTU	26
	Reliance 750, 1000	DSD6UNIBAOUK	DS6UNIBAOU	19
	Reliance 1500, 2000	DSD8UNIBAOUK	DS8UNIBAOU	19
	Reliance 2500, 3000	DSD10UNIBAOUK	DS10UNIBAOU	19
	Vantage 2000	DSD10FVTGUK	DS10FVTGU	27
	Vantage 3000	DSD12FVTGUK	DS12FVTGU	27



APPLIANCE MANUFACTURER	MODEL V1	DSD ADAPTER CODE	DS ADAPTER CODE	Page
*** If you are unable to find a model or have any questions or comments, please contact our Customer Service Department.				
<b>FULTON BOILER</b> (continued)	Vantage 4000, 5000, 6000	DSD14FVTGUK	DS14FVTGU	27
	Muffler Adapter 4" Diameter	DSD4FMAMUK	DS4FMAMU	N/A
	Muffler Adapter 6" Diameter	DSD6FMAMUK	DS6FMAMU	N/A
	VLP 750 / 1150	DSD4FULTUK	DS4FULTU	26
	4" FULTON EXHAUST MUFFLER - 2 pc. kit	DSD4FMAUK + DSD4UNIBAOMUK	DS4FMAU + DS4UNIBAOMU	26
	6" FULTON EXHAUST MUFFLER - 2 pc. Kit	DSD6FMAUK + DSD6UNIBAOMUK	DS6FMAU + DS6UNIBAOMU	26
<b>GASMASTER INDUSTRIES</b>	GMI 200 / 300 / 400	DSD4UNIBAOUK	DS4UNIBAOU	19
	GMI 600	DSD6UNIBAOUK	DS6UNIBAOU	19
	GMI 800, 1M, 1.5M	DSD8UNIBAOUK	DS8UNIBAOU	19
	GMI 2M	DSD10UNIBAOUK	DS10UNIBAOU	19
	GMI 4M	DSDøUNIBAOUK	DSøUNIBAOU	19
	GMI 8M	DSD24UNIBAOUK	DS24UNIBAOU	19
<b>GIBSON</b>	see NORDYNE			N/A
<b>H.B. SMITH</b>	PVGA-2 thru PVGA-7	DSD4UNIBAUk	DS4UNIBAU	19
<b>HAMILTON</b>	EVO 299, 399	DSD4FFNSAUK	DS4FFNSAU	24-25
	EVO 599	DSD5FFNSAUK	DS5FFNSAU	24-25
<b>HATCO CORPORATION</b>	POWERMITE PMG 100 / 200	DSD4UNIBAOUK	DS4UNIBAOU	19
<b>HAYWARD POOL PRODUCTS</b>	H250IDL / H350IDL / H400IDL	DSD6HFFUK	DS6HFFU	27
	H250FDN / H250FDP	DSD6HFFUK	DS6HFFU	27
	H350FDN / H350FDP H400FDN / H400FDP	DSD8HFFUK	DS8HFFU	27
<b>HEATFAB</b>	Saf-T Vent CI PLUS Male	DSDøHFMUK	DSøHFMU	27
	Saf-T Vent CI PLUS Female	DSDøHFFUK	DSøHFFU	27
	Saf-T Vent EZ Seal Male	DSDøHFMUK	DSøHFMU	27
	Saf-T Vent EZ Seal Female	DSDøHFFUK	DSøHFFU	27
<b>HOBART CORPORATION</b>	IB235 / IB290 Booster Heater	DSD4UNIBAUk	DS4UNIBAU	19
<b>HYDROTHERM</b>	KN-6	DSD4FFNSAUK	DS4FFNSAU	24-25
	KN-10	DSD4FFNSAUK	DS4FFNSAU	24-25
	KN-16	DSD6FFNSAUK	DS6FFNSAU	24-25
	KN-20	DSD6FFNSAUK	DS6FFNSAU	24-25
	KN-26	DSD8FFNSAUK	DS8FFNSAU	24-25
	KN-30	DSD8FFNSAUK	DS8FFNSAU	24-25
	KN-230	DSD8HFFUK	DS8HFFU	27
	GX-400	DSD4UNIBAUk	DS4UNIBAU	19
<b>INTELLIHOT</b>	Gen II-IQ251	DSD3PVCUK	DS3PVCU	N/A
	Gen II-IQ751, IQ1001, IQ1501	DSD6PVCUK	DS6PVCU	30
<b>LAARS HEATING SYSTEMS</b>	MINI-THERM JVH/JHS 50	DSD4UNIBAOUK	DS4UNIBAOU	19
	MINI-THERM JVH/JVS 75-100	DSD5UNIBAOUK	DS5UNIBAOU	19
	MINI-THERM JVH/JVS 125-160	DSD6UNIBAOUK	DS6UNIBAOU	19
	MINI-THERM JVH/JVS 225	DSD7UNIBAOUK	DS7UNIBAOU	19
	MightyTherm2 200	DSD5UNIBAOUK	DS5UNIBAOU	19
	MightyTherm2 300	DSD6UNIBAOUK	DS6UNIBAOU	19
	MightyTherm2 400	DSD7UNIBAOUK	DS7UNIBAOU	19

APPLIANCE MANUFACTURER	MODEL V1	DSD ADAPTER CODE	DS ADAPTER CODE	Page
*** If you are unable to find a model or have any questions or comments, please contact our Customer Service Department.				
<b>LAARS HEATING SYSTEMS</b> (continued)	MightyTherm2 500	DSD8UNIBAOUK	DS8UNIBAOU	19
	MightyTherm2 750, 1000	DSD10UNIBAOUK	DS10UNIBAOU	19
	MightyTherm2 1250, 1500	DSD12UNIBAOUK	DS12UNIBAOU	19
	MightyTherm2 1750, 2000	DSD14UNIBAOUK	DS14UNIBAOU	19
	MagnaTherm 1600	DSD6UNIBAOUK	DS6UNIBAOU	19
	MagnaTherm 2000, 2500	DSD8UNIBAOUK	DS8UNIBAOU	19
	MagnaTherm 3000, 3500	DSD10UNIBAOUK	DS10UNIBAOU	19
	MagnaTherm 4000	DSD12UNIBAOUK	DS12UNIBAOU	19
	NeoTherm 285, 399, 500, 600	DSD4PVCUK	DS4PVCU	30
	NeoTherm 750, 850	DSD6PVCUK	DS6PVCU	30
	NeoTherm LC NTH1000/NTV1000	DSD6PVCUK	DS6PVCU	30
	NeoTherm LC NTH1200/NTV1200	DSD6PVCUK	DS6PVCU	30
	PENNANT 500	DSD8UNIBAOUK	DS8UNIBAOU	19
	PENNANT 750, 1000	DSD10UNIBAOUK	DS10UNIBAOU	19
	PENNANT 1250, 1500	DSD12UNIBAOUK	DS12UNIBAOU	19
	PENNANT 1750, 2000	DSD14UNIBAOUK	DS14UNIBAOU	19
	RHEOS 1200 / 1600 OR RHEOS PLUS 1200 / 1600	DSD6UNIBAOUK	DS6UNIBAOU	19
	RHEOS 2000 OR RHEOS PLUS 2000	DSD7UNIBAOUK	DS7UNIBAOU	19
	RHEOS 2400 OR RHEOS PLUS 2400	DSD10UNIBAOUK	DS10UNIBAOU	19
	<b>LENNOX</b>	CXEB-6 / CXEB-7	DSD4UNIBAU	DS4UNIBAU
<b>LOCHINVAR</b>	COPPER-FIN CF & CH300	DSD5UNIBAOUK	DS5UNIBAOU	19
	Copper-Fin & Copper-Fin II			N/A
	CBN0497; CHN0402, 0502	DSD6UNIBAOUK	DS6UNIBAOU	19
	CBN315, 0647, 0747; CHN0652, 752	DSD8UNIBAOUK	DS8UNIBAOU	19
	CBN360	DSD9UNIBAOUK	DS9UNIBAOU	19
	CBN399, 500, 0987; CHN0992	DSD10UNIBAOUK	DS10UNIBAOU	19
	CBN1257, 1437; CHN1262, 1442, 1802, 2072	DSD12UNIBAOUK	DS12UNIBAOU	19
	CBN1797, 2067	DSD14UNIBAOUK	DS14UNIBAOU	19
	CF & CH 401 / 501	DSD6UNIBAOUK	DS6UNIBAOU	19
	CF & CH 651 / 751	DSD8UNIBAOUK	DS8UNIBAOU	19
	CF & CH 990	DSD10UNIBAOUK	DS10UNIBAOU	19
	CF & CH 1260 / 1440	DSD12UNIBAOUK	DS12UNIBAOU	19
	CF & CH 1800 / 2070	DSD14UNIBAOUK	DS14UNIBAOU	19
	Crest FBN 0751, 1001	DSD6CRESTUK	DS6CRESTU	28
	Crest FBN 1251, 1501, 1751, 2001	DSD8CRESTUK	DS8CRESTU	28
	Crest FBN 2500	DSD9CRESTUK	DS9CRESTU	28
	Crest FBN 3000 ,3500	DSD10CRESTUK	DS10CRESTU	28
	Crest FBN 4000	DSD12CRESTUK	DS12CRESTU	28
	Crest FBN 5000, 6000	DSD14CRESTUK	DS14CRESTU	28
	Knight XL KBN 400/501/601	DSD4PVCUK	DS4PVCU	30
	Knight XL KBN 701/801	DSD6PVCUK	DS6PVCU	30
	Armor AWN 151, 200	DSD3PVCUK	DS3PVCU	N/A
	Armor AWN 286, 400, 501, 601	DSD4PVCUK	DS4PVCU	30
	Armor AWN 701, 801	DSD6PVCUK	DS6PVCU	30

APPLIANCE MANUFACTURER	MODEL V1	DSD ADAPTER CODE	DS ADAPTER CODE	Page
*** If you are unable to find a model or have any questions or comments, please contact our Customer Service Department.				
LOCHINVAR (continued)	Armor X2 AWN1000PM, 1300PM, 1500PM	DSD6PVCUK	DS6PVCU	30
	Armor Wall Mount WAN125PM, 200PM	DSD3PVCUK	DS3PVCU	N/A
	Shield SNR126-065, SNR151-100, SNR201-100	DSD3PVCUK	DS3PVCU	N/A
	Shield SNA151-100, SNA201-100	DSD3PVCUK	DS3PVCU	N/A
	Shield SNA286-125, SNA401-125, SNA501-125	DSD4PVCUK	DS4PVCU	30
	SYNC SBN 1000, 1300, 1500	DSD6PVCUK	DS6PVCU	30
	EB / EW / EP 150 / 200	DSD4UNIBAUk	DS4UNIBAU	19
	EB / EW / EP 250 / 300	DSD5UNIBAUk	DS5UNIBAU	19
	"EFFICIENCY + Sidewall Vent Cap Adapter"	DSDØUNIBAOMUK	DSØUNIBAOMU	19
	FTXL 400, 500, 600	DSD4PVCUK	DS4PVCU	30
	FTXL 725, 850	DSD6PVCUK	DS6PVCU	30
	Intelli-Fin IBL & IBN 1500	DSD6UNIBAUk	DS6UNIBAU	19
	Intelli-Fin IBL & IBN 1700	DSD7UNIBAUk	DS7UNIBAU	19
	Intelli-Fin IBL & IBN 2000	DSD8UNIBAUk	DS8UNIBAU	19
	PB & PF Series 0250	DSD5UNIBAOUK	DS5UNIBAOU	19
	PB & PF Series 0500 / 0501	DSD7UNIBAOUK	DS7UNIBAOU	19
	PB & PF Series 0750 / 0751	DSD9UNIBAOUK	DS9UNIBAOU	19
	POWER - FIN			N/A
	PB & PF Series 1000 / 1001	DSD10UNIBAOUK	DS10UNIBAOU	19
	PB & PF Series 1300	DSD12UNIBAOUK	DS12UNIBAOU	19
	PB & PF Series 1500	DSD8UNIBAOUK	DS8UNIBAOU	19
	PB & PF Series 1700	DSD8UNIBAOUK	DS8UNIBAOU	19
	PB & PF Series 2000	DSD10UNIBAOUK	DS10UNIBAOU	19
	PBN & PFN Series 0502 - Cat IV	DSD4UNIBAOUK	DS4UNIBAOU	19
	PBN & PFN Series 0502 - Cat II	DSD7UNIBAOUK	DS7UNIBAOU	19
	PBN & PFN Series 0752 - Cat IV	DSD5UNIBAOUK	DS5UNIBAOU	19
	PBN & PFN Series 0752 - Cat II	DSD9UNIBAOUK	DS9UNIBAOU	19
	PBN & PFN Series 1002 - Cat IV	DSD6UNIBAOUK	DS6UNIBAOU	19
	PBN & PFN Series 1002 - Cat II	DSD10UNIBAOUK	DS10UNIBAOU	19
	PBN & PFN Series 1302 - Cat IV	DSD8UNIBAOUK	DS8UNIBAOU	19
	PBN & PFN Series 1302 - Cat II	DSD12UNIBAOUK	DS12UNIBAOU	19
	PBN & PFN Series 1501 - Cat IV	DSD6UNIBAOUK	DS6UNIBAOU	19
	PBN & PFN Series 1501 - Cat II	DSD8UNIBAOUK	DS8UNIBAOU	19
	PBN & PFN Series 1701 - Cat IV	DSD7UNIBAOUK	DS7UNIBAOU	19
	PBN & PFN Series 1701 - Cat II	DSD9UNIBAOUK	DS9UNIBAOU	19
	PBN & PFN Series 2001 - Cat IV	DSD8UNIBAOUK	DS8UNIBAOU	19
	PBN & PFN Series 2001 - Cat II	DSD10UNIBAOUK	DS10UNIBAOU	19
	ERN 151 / ERN 201	DSD4UNIBAOUK	DS4UNIBAOU	19
	ERN 251 / ERN 301 / ERN 401	DSD5UNIBAOUK	DS5UNIBAOU	19
	KNIGHT KBN 400/501/601	DSD4PVCUK	DS4PVCU	30
	KNIGHT KBN 400/501/601 HeatFab	DSD4HFFUK	DS4HFFU	27
KNIGHT KBN 701/801	DSD6PVCUK	DS6PVCU	30	
KNIGHT KBN 701/801 HeatFab	DSD6HFFUK	DS6HFFU	27	

APPLIANCE MANUFACTURER	MODEL V1	DSD ADAPTER CODE	DS ADAPTER CODE	Page
*** If you are unable to find a model or have any questions or comments, please contact our Customer Service Department.				
<b>MODINE</b>	HD/HDB - 30 / 45 / 60 / 75	DSD3UNIBAOUK	DS3UNIBAOU	19
	HD/HDB - 100 / 125	DSD4UNIBAOUK	DS4UNIBAOU	19
	HDS/HDC - 30 / 45 / 60 / 75	DSD3UNIBAOUK	DS3UNIBAOU	19
	HDS/HDC - 60 / 75 / 100 / 125	DSD4UNIBAOUK	DS4UNIBAOU	19
	PDP, BDP 150, 175, 200	DSD5UNIBAUK	DS5UNIBAOU	19
	PDP, BDP 250, 300, 350, 400	DSD6UNIBAUK	DS6UNIBAOU	19
<b>NORDYNE</b>	FG6RA - 60 thru 120	DSD4UNIBAUK	DS4UNIBAOU	19
	FG6RA - 144	DSD5UNIBAUK	DS5UNIBAOU	19
	FG6RAK All Models	DSD4UNIBAUK	DS4UNIBAOU	19
<b>NORITZ</b>	NCC199, NC250, NH150, NH199	DSD4UNIBAOUK	DS4UNIBAOU	19
	NC380	DSD5UNIBAOUK	DS5UNIBAOU	19
<b>NORTEC</b>	GS 100	DSD3UNIBAOUK	DS3UNIBAOU	19
	GS 200	DSD4UNIBAOUK	DS4UNIBAOU	19
	GS 300, 400	DSD5UNIBAOUK	DS5UNIBAOU	19
	GS 500, 600	DSD6UNIBAOUK	DS6UNIBAOU	19
	GH Series 100 thru 400	DSDØUNIBAOUK	DSØUNIBAOU	19
<b>NOVAFLEX</b>	Z-Vent Double Wall Male	DSDØHFMUK	DSØHFMU	27
	Z-Vent Double Wall Female	DSDØHFFUK	DSØHFFU	27
	Z-Vent Single Wall Male	DSDØHFMUK	DSØHFMU	27
	Z-Vent Single Wall Female	DSDØHFFUK	DSØHFFU	27
<b>NTI</b>	Trinity 60-110	DSD3FFNSAU	DS3FFNSAU	24-25
	Trinity 154	DSD3FFNSAU	DS3FFNSAU	24-25
	Trinity 155-250	DSD3FFNSAU	DS3FFNSAU	24-25
	Trinity 300-399	DSD4FFNSAU	DS4FFNSAU	24-25
<b>PARKER</b>	TC150, TC210 (power vent model-single exhaust)	DSD8MM197UK	DS8MM197U	34
	TC350 (power vent model-single exhaust)	DSD10MM248UK	DS10MM248U	34
	TC600 (power vent model-single exhaust)	DSD12MM299UK	DS12MM299U	34
	TC800, 1000 (power vent model-single exhaust)	DSD14MM349UK	DS14MM349U	34
	TC1450 (power vent model-single exhaust)	DSD18MM451UK	DS18MM451U	34
<b>PATTERSON-KELLEY</b> ** REFER TO BOILER INSTRUCTIONS	MACH C-300 with Test Port and Drain	DSD4PKMACHUK	DS4PKMACHU	28
	MACH C-450 with Test Port and Drain	DSD5PKMACHUK	DS5PKMACHU	28
	MACH C-750 - has HeatFab adapter	DSD6PKMACHUK	DS6PKMACHU	28
	MACH C-900	DSD8PKMACHUK	DS8PKMACHU	28
	MACH C-900 / C-1050 with Test Port and Drain	DSD8PKMACHUK	DS8PKMACHU	28
	MACH C-1050	DSD8PKMACHUK	DS8PKMACHU	28
	MACH C-1050 offset adapter with Test Port and Drain	DSD8PKMACHOFFUK	DS8PKMACHOFFU	30
	MACH CM300, CM399, CM500	DSD4FFNSAUK	DS4FFNSAU	24-25
	MACH C-750 - has HeatFab adapter	DSD6HFFUK	DS6HFFU	27
	MACH C-1500 with Test Port and Drain	DSD9.8PKSMACHUK	DS9.8PKSMACHU	28
	MACH C-1500 reducer to 8 inch*	DSD9.8PKMACH8UK	DS9.8PKMACH8U	29
	MACH C-1500 reducer to 6 inch*	DSD9.8PKMACH6UK	DS9.8PKMACH6U	29

APPLIANCE MANUFACTURER	MODEL V1	DSD ADAPTER CODE	DS ADAPTER CODE	Page
*** If you are unable to find a model or have any questions or comments, please contact our Customer Service Department.				
<b>PATTERSON-KELLEY</b> (continued)	MACH C-2000 with Test Port and Drain	DSD9.8PKSMACHUK	DS9.8PKSMACHU	28
	MACH C-2000 reducer to 8 inch*	DSD9.8PKMACH8UK	DS9.8PKMACH8U	29
	MACH C-2000 reducer to 6 inch*	DSD9.8PKMACH6UK	DS9.8PKMACH6U	29
	MACH C-2500 with Test Port and Drain	DSD9.8PKSMACHUK	DS9.8PKSMACHU	28
	MACH C-2500 reducer to 8 inch*	DSD9.8PKMACH8UK	DS9.8PKMACH8U	29
	MACH C-3000 with Test Port and Drain	DSD9.8PKSMACHUK	DS9.8PKSMACHU	28
	MACH C-3000 reducer to 8 inch	DSD9.8PKMACH8U	DS9.8PKMACH8U	29
	MODU-FIRE 750-FD 6"	DSD6UNIBAOUK	DS6UNIBAOU	19
	MACH C-4000 with Test Port and Drain	DSD9.8PKSMACHUK	DS9.8PKSMACHU	28
	MACH c-4000 reducer to 8 inch	DSD9.8PKMACH8UK	DS9.8PKMACH8U	29
	MODU-FIRE 750-FD 6" reduce 5"*	DSD6PKMF5UK	DS6PKMF5U	29
	MODU-FIRE 750-FD 6" reduce 4"*	DSD6PKMF4UK	DS6PKMF4U	29
	MODU-FIRE 1000-FD 6"	DSD6UNIBAOUK	DS6UNIBAOU	19
	MODU-FIRE 1000-FD 6" reduce 5"*	DSD6PKMF5UK	DS6PKMF5U	29
	MODU-FIRE 1000-FD 6" reduce 4"	DSD6PKMF4UK	DS6PKMF4U	29
	MODU-FIRE 1500-FD 8"	DSD8UNIBAOUK	DS8UNIBAOU	19
	MODU-FIRE 1500-FD reduce to 6"*	DSD8PKMF6UK	DS8PKMF6U	29-30
	MODU-FIRE 2000-FD 8"	DSD8UNIBAOUK	DS8UNIBAOU	19
	MODU-FIRE 2000-FD reduce to 6"*	DSD8PKMF6UK	DS8PKMF6U	29-30
	MODU-FIRE 2500-FD 10"	DSD10UNIBAOUK	DS10UNIBAOU	19
	MODU-FIRE 2500-FD reduce to 8"*	DSD10PKMF8UK	DS10PKMF8U	30
	MODU-FIRE 3000-FD 10"	DSD10UNIBAOUK	DS10UNIBAOU	19
	MODU-FIRE 3000-FD reduce to 8"*	DSD10PKMF8UK	DS10PKMF8U	30
	SONIC SC650, SC750, SC850, SC1000	DSD6HFFUK	DS6HFFU	27
	SONIC SC1500, SC2000, SC3000, SC4000	DSD9.8PKSMACHUK	DS9.8PKSMACHU	28
	THERMIFIC N700 / N1000	DSD10UNIBAOUK	DS10UNIBAOU	19
THERMIFIC N1500 / N1700 / N1900	DSD12UNIBAOUK	DS12UNIBAOU	19	
VELOX N750VX, N1000VX	DSD6UNIBAOUK	DS6UNIBAOU	19	
VELOX N1500VX, N1700VX, N2000VX	DSD8UNIBAOUK	DS8UNIBAOU	19	
<b>PEERLEDS</b>	Cast 92-2	DSD3HFFUK	DS3HFFU	27
	Cast 92-4	DSD4HFFUK	DS4HFFU	27
	DE Series			N/A
	PDE Series			N/A
	PSC Series			N/A
	PSC II Series	DSD3HFFUK	DS3HFFU	27
	PF-50, -80, -110, -140, -200, -210	DSD3PVCUK	DS3PVCU	N/A
	PF-300, -399, -460	DSD4PVCUK	DS4PVCU	30
	PF-850, -1000	DSD6FFNSAUK	DS6FFNSAU	24-25
PF-1500	DSD7FFNSAUK	DS7FFNSAU	24-25	
<b>PENNCO</b>	FSB Series			N/A
	FS Series FS-2 thru FS-7	DSD4UNIBAUUK	DS4UNIBAU	19
<b>PENTAIR POOL PRODUCTS</b>	MINI MAX 75 100, MasterTemp	DSD5UNIBAOUK	DS5UNIBAOU	19
<b>PRECISION TEMP</b>	PT-200 Gas Booste Heater	DSD4UNIBAUUK	DS4UNIBAU	19

APPLIANCE MANUFACTURER	MODEL V1	DSD ADAPTER CODE	DS ADAPTER CODE	Page
*** If you are unable to find a model or have any questions or comments, please contact our Customer Service Department.				
<b>PURE HUMIDIFIER CO.</b>	GX-3 / GX-4	DSD4UNIBAOUK	DS4UNIBAOU	19
	GX-8	DSD6UNIBAOUK	DS6UNIBAOU	19
	GX-12	DSD8UNIBAOUK	DS8UNIBAOU	19
<b>PVC (Fits Female end PVC)</b>	PVC 3"	DSD3.5PVCUK	DS3.5PVCU	30-31
	PVC 4"	DSD4PVCUK	DS4PVCU	30
	PVC 5"	DSD5PVCUK	DS5PVCU	30
	PVC 6"	DSD6PVCUK	DS6PVCU	30
	PVC 8"	DSD8PVCUK	DS8PVCU	30
<b>PVI INDUSTRIES</b>	POWER VT 125, 250, 300	DSD6PVCUK	DS6PVCU	30
	Power VT Plus (500, 750, 900, 1000, 1500, 1800, 2000 MBh input)	DSD6PVIPVCUK	DS6PVIPVCU	31
	Power VTX (500, 750, 1000 MBh input)	DSD6PVIPVCUK	DS6PVIPVCU	31
	Tricon	DSD6PVIUK	DS6PVIU	31
	Conquest 199 to 300	DSD4PVCUK	DS4PVCU	30
	Conquest 399 to 800	DSD6PVIPVCUK	DS6PVIPVCU	31
	Platinum (All models)	DSD4PVCUK	DS4PVCU	30
	Turbopower 96 (500, 750, 1000, 1300, 1600 MBh input)	DSD6PVIPVCUK	DS6PVIPVCU	31
	Turbopower 99 (500, 1000 MBh input)	DSD4PVCUK	DS4PVCU	30
	Turbopower 99 (1500, 1950 MBh input)	DSD5PVCUK	DS5PVCU	30
	TurboPower 250, 375	DSD4UNIBAOUK	DS4UNIBAOU	
	TurboPower 500	DSD5UNIBAOUK	DS5UNIBAOU	19
	TurboPower 750	DSD6UNIBAOUK	DS6UNIBAOU	19
	TurboPower 1000, 1250, 1500	DSD8UNIBAOUK	DS8UNIBAOU	19
	TurboPower 2000, 2500	DSD10UNIBAOUK	DS10UNIBAOU	19
	TurboPower 3000	DSD12UNIBAOUK	DS12UNIBAOU	19
<b>RAYPAK</b>	HI DELTA 101, 151	DSD4UNIBAOUK	DS4UNIBAOU	19
	HI DELTA 201, 251, 301, 302	DSD5UNIBAOUK	DS5UNIBAOU	19
	HI DELTA 401, 402, 502	DSD6UNIBAOUK	DS6UNIBAOU	19
	HI DELTA 652, 752, 902	DSD8UNIBAOUK	DS8UNIBAOU	19
	HI DELTA 992	DSD10UNIBAOUK	DS10UNIBAOU	19
	HI DELTA 1262, 1532	DSD12UNIBAOUK	DS12UNIBAOU	19
	HI DELTA 1802, 2002, 2072	DSD14UNIBAOUK	DS14UNIBAOU	19
	HI DELTA 2342	DSD16UNIBAOUK	DS16UNIBAOU	19
	DELTA LIMITED 399, 499	DSD6UNIBAOUK	DS6UNIBAOU	19
	DELTA LIMITED 649, 749, 899	DSD8UNIBAOUK	DS8UNIBAOU	19
	DELTA LIMITED 989	DSD10UNIBAOUK	DS10UNIBAOU	19
	DELTA LIMITED 1259, 1529	DSD12UNIBAOUK	DS12UNIBAOU	19
	DELTA LIMITED 1799, 1999, 2069	DSD14UNIBAOUK	DS14UNIBAOU	19
	DELTA LIMITED 2339	DSD16UNIBAOUK	DS16UNIBAOU	19
	MVB 503, 753, 1003	DSD6UNIBAOUK	DS6UNIBAOU	19
	MVB 1253, 1503, 1753, 2003	DSD8UNIBAOUK	DS8UNIBAOU	19
	MVB 504	DSD8UNIBAOUK	DS8UNIBAOU	19
	MVB 754, 1104, 2503, 3003	DSD10UNIBAOUK	DS10UNIBAOU	19



APPLIANCE MANUFACTURER	MODEL V1	DSD ADAPTER CODE	DS ADAPTER CODE	Page
*** If you are unable to find a model or have any questions or comments, please contact our Customer Service Department.				
<b>RAYPAK</b> (continued)	MVB 1504, 3503, 4003	DSD12UNIBAOUK	DS12UNIBAOU	19
	MVB 2004	DSD14UNIBAOUK	DS14UNIBAOU	19
	XFYRE 300, 400, 500	DSD4PVCUK	DS4PVCU	30
	XFYRE 700, 850	DSD6UNIBAOUK	DS6UNIBAOU	19
	XTHERM 1005	DSD6UNIBAOUK	DS6UNIBAOU	19
	XTHERM 1505, 2005	DSD8UNIBAOUK	DS8UNIBAOU	19
	XTHERM 2505, 3005, 3505	DSD10UNIBAOUK	DS10UNIBAOU	19
	XTHERM 4005	DSD12UNIBAOUK	DS12UNIBAOU	19
<b>RBI WATER HEATERS</b>	FUTERA 200 / 250 / 300	DSD4UNIBAOUK	DS4UNIBAOU	19
	FUTERA 350 / 400	DSD5UNIBAOUK	DS5UNIBAOU	19
	FUTERA II 500 (THRU WALL)	DSD6UNIBAOUK	DS6UNIBAOU	19
	FUTERA II 750 (THRU WALL)	DSD8UNIBAOUK	DS8UNIBAOU	19
	FUTERA II 1000 (THRU WALL)	DSD9UNIBAOUK	DS9UNIBAOU	19
	FUTERA II 1250, 1500 (THRU WALL)	DSD10UNIBAOUK	DS10UNIBAOU	19
	FUTERA II 1750, 1950 (THRU WALL)	DSD12UNIBAOUK	DS12UNIBAOU	19
	FUTERA II 500 (VERTICAL)	DSD8UNIBAOUK	DS8UNIBAOU	19
	FUTERA II 750, 1000 (VERTICAL)	DSD10UNIBAOUK	DS10UNIBAOU	19
	FUTERA II 1250, 1500 (VERTICAL)	DSD12UNIBAOUK	DS12UNIBAOU	19
	FUTERA II 1750, 1950 (VERTICAL)	DSD14UNIBAOUK	DS14UNIBAOU	19
	FUTERA II 2000 - CAT I	DSD12UNIBAOUK	DS12UNIBAOU	19
	FUTERA II 2000 - CAT II	DSD10UNIBAOUK	DS10UNIBAOU	19
	FUTERA II 2000 - CAT IV	DSD10UNIBAOUK	DS10UNIBAOU	19
	FUTERA III 750 (CAT I)	DSD8UNIBAOUK	DS8UNIBAOU	19
	FUTERA III 1000 (CAT I)	DSD9UNIBAOUK	DS9UNIBAOU	19
	FUTERA III 1250, 1500 (CAT I)	DSD10UNIBAOUK	DS10UNIBAOU	19
	FUTERA III 1750, 2000 (CAT I)	DSD12UNIBAOUK	DS12UNIBAOU	19
	FUTERA III 500, 750 (CAT II)	DSD6UNIBAOUK	DS6UNIBAOU	19
	FUTERA III 1000 (CAT II)	DSD7UNIBAOUK	DS7UNIBAOU	19
	FUTERA III 1250, 1500 (CAT II)	DSD8UNIBAOUK	DS8UNIBAOU	19
	FUTERA III 1750, 2000 (CAT II)	DSD10UNIBAOUK	DS10UNIBAOU	19
	FUTERA III 500, 750 (CAT IV)	DSD5UNIBAOUK	DS5UNIBAOU	19
	FUTERA III 1000, 1250 (CAT IV)	DSD6UNIBAOUK	DS6UNIBAOU	19
	FUTERA III 1500 (CAT IV)	DSD8UNIBAOUK	DS8UNIBAOU	19
	FUTERA III 1750, 2000 (CAT IV)	DSD10UNIBAOUK	DS10UNIBAOU	19
	Futera II, III, LCD & Dominator Exhaust Term Adapters	DSDØUNIBAUK	DSØUNIBAUK	19
	FUTERA FUSION 500 / 750 / 1000	DSD7UNIBAOUK	DS7UNIBAOU	19
	FUTERA FUSION 1200 / 1500	DSD8UNIBAOUK	DS8UNIBAOU	19
	FUTERA FUSION 1750 / 2000	DSD10UNIBAOUK	DS10UNIBAOU	19
	FUTERA FLX 2500/3000	DSD8HFFUK	DS8HFFU	27
	FUTERA FLX 3500/4000	DSD10HFFUK	DS10HFFU	27
	Futera II, III, LCD & Dominator Exhaust Term Adapters	DSDØUNIBAUK	DSØUNIBAUK	19
	Flexcore 1500, 2000	DSD6FFNSAUK	DS6FFNSAU	24-25
Flexcore 2500, 3000	DSD8FFNSAUK	DS8FFNSAU	24-25	

APPLIANCE MANUFACTURER	MODEL V1	DSD ADAPTER CODE	DS ADAPTER CODE	Page
*** If you are unable to find a model or have any questions or comments, please contact our Customer Service Department.				
<b>RBI WATER HEATERS</b> (continued)	Flexcore 3500, 4000, 4500	DSD10FFNSAUK	DS10FFNSAU	24-25
	Flexcore 5000, 6000	DSD12FFNSAUK	DS12FFNSAU	24-25
	Dominator 300, 400	DSD6UNIBAOUK	DS6UNIBAOU	19
	Dominator 600	DSD7UNIBAOUK	DS7UNIBAOU	19
	Dominator 750	DSD8UNIBAOUK	DS8UNIBAOU	19
	Dominator 900, 1050	DSD10UNIBAOUK	DS10UNIBAOU	19
	Dominator 1200, 1350, 1480	DSD12UNIBAOUK	DS12UNIBAOU	19
	Dominator 1500, 1650, 1950, 1970, 2100, 2300	DSD14UNIBAOUK	DS14UNIBAOU	19
	Infinite Energy 2-199	DSD3PVCUK	DS3PVCU	N/A
	Infinite Energy 2-399, -500	DSD4PVCUK	DS4PVCU	30
	Infinite Energy 2-750, -1000	DSD6PVCUK	DS6PVCU	30
<b>REZNOR</b>	FT 30 - 65	DSD4UNIBAUK	DS4UNIBAU	19
	BE & FE 25 - 100	DSD4UNIBAUK	DS4UNIBAU	19
	BE & FE 125 - 250	DSD5UNIBAUK	DS5UNIBAU	19
	BE & FE 300 - 400	DSD6UNIBAUK	DS6UNIBAU	19
<b>RIELLO</b>	RTC3000	DSD10MM250	DS10MM250	34
	RTC4000	DSD12MM300	DS12MM300	34
	RTC5000, RTC6000	DSD14MM350	DS14MM350	34
	RTC8000	DSD16MM400	DS16MM400	34
	RTC10000	DSD18MM450	DS18MM450	34
<b>RIVERSIDE HYDRONICS</b>	PRIMERA 400 / 540	DSD6UNIBAOUK	DS6UNIBAOU	19
	PRIMERA 750 / 1000	DSD8UNIBAOUK	DS8UNIBAOU	19
	PRIMERA 1200	DSD10UNIBAOUK	DS10UNIBAOU	19
	PRIMERA 1600 / 2000	DSD12UNIBAOUK	DS12UNIBAOU	19
	EPV Series / Emblem	DSD4UNIBAOUK	DS4UNIBAOU	19
	Centauri	DSD6PVIUK	DS6PVIU	31
	Centauri +	DSD6PVIPVCUK	DS6PVIPVCU	31
	HeatStation HS 1000, 1250, 1500, 1750, 2000		8"	N/A
	M3 500, 600, 650, 700, 750, 800	DSD6PVIPVCUK	DS6PVIPVCU	31
<b>SLANTFIN</b>	CARAVAN SERIES	DSD3HFFUK	DS3HFFU	27
	CONCEPT 21 SERIES	DSD3HFFUK	DS3HFFU	27
	PRODIGY 21	DSD3HFFUK	DS3HFFU	27
	VICTORY VSPH SERIES	DSD3HFFUK	DS3HFFU	27
	VICTORY II SERIES	DSD3HFFUK	DS3HFFU	27
<b>SMITH BOILER</b>	Series 19A / 19HE			N/A
	19HE-3, -4	DSD7UNIBAOUK	DS7UNIBAOU	19
	19HE-5, -6	DSD8UNIBAOUK	DS8UNIBAOU	19
	19HE-7	DSD9UNIBAOUK	DS9UNIBAOU	19
	19HE-8, -9, -10	DSD10UNIBAOUK	DS10UNIBAOU	19
	19HE-11, -12	DSD12UNIBAOUK	DS12UNIBAOU	19
	Series 28A/28A RTS/28HE/28HE RTS			N/A
	28RTS / HE-4, -5, -6	DSD10UNIBAOUK	DS10UNIBAOU	19

APPLIANCE MANUFACTURER	MODEL V1	DSD ADAPTER CODE	DS ADAPTER CODE	Page
*** If you are unable to find a model or have any questions or comments, please contact our Customer Service Department.				
<b>SMITH BOILER</b> (continued)	28RTS / HE-7, -8	DSD12UNIBAOUK	DS12UNIBAOU	19
	28RTS / HE-9, -10, -11, -12, -13	DSD14UNIBAOUK	DS14UNIBAOU	19
	28RTS / HE-14, -15, -16	DSD16UNIBAOUK	DS16UNIBAOU	19
	28RTS / HE-17, -18	DSD18UNIBAOUK	DS18UNIBAOU	19
<b>SNYDER GENERAL FURNACE</b>	GUA or GDA 100 / 200	DSD4UNIBAUK	DS4UNIBAU	19
<b>STERLING</b>	TF 100 - 250	DSD5UNIBAUK	DS5UNIBAU	19
	TF 300 - 400	DSD6UNIBAUK	DS6UNIBAU	19
	RF Series	DSD4UNIBAUK	DS4UNIBAU	19
<b>STERO COMPANY</b>	SIB235 / SIB290 Booster Heater	DSD4UNIBAUK	DS4UNIBAU	19
<b>TAKAGI</b>	TH-2S-DV	DSD4FFNSAU	DS4FFNSAU	24-25
	T-H1	DSD4UNIBAUK	DS4UNIBAU	19
	T-K1	DSD4UNIBAUK	DS4UNIBAU	19
<b>TAKAGI (continued)</b>	T-K2	DSD4UNIBAUK	DS4UNIBAU	19
	T-K3	DSD4UNIBAUK	DS4UNIBAU	19
	T-K1S	DSD4UNIBAUK	DS4UNIBAU	19
	T-K Jr.	DSD4UNIBAUK	DS4UNIBAU	19
	T-KD20	DSD4UNIBAUK	DS4UNIBAU	19
	T-M1	DSD4UNIBAUK	DS4UNIBAU	19
	T-M50	DSD5UNIBAUK	DS5UNIBAU	19
<b>TAPAN</b>	see NORDYNE			N/A
<b>TELEDYNE LAARS</b>	See LAARS HEATING SYSTEMS			N/A
<b>THERMAL SOLUTIONS</b>	Apex			N/A
	APX425C, 525C	DSD4FFNSAUK	DS4FFNSAU	24-25
	APX625C, 725C, 825C	DSD6FFNSAUK	DS6FFNSAU	24-25
	Evolution EVH-500 / EVH-750	DSD4HFFUK	DS4HFFU	27
	Arctic			
	ARC-1000	DSD6HFFUK	DS6HFFU	27
	ARC-1500, 2000	DSD8HFFUK	DS8HFFU	27
	ARC-2500, 3000	DSD10HFFUK	DS10HFFU	27
	"Evolution EVH-1000 / EVH-1500 / EVH-2000"	DSD6HFFUK	DS6HFFU	27
	Evolution			N/A
	EVA-500 / 750	DSD4HFFUK	DS4HFFU	27
	EVA-1000 / 1500 / 2000 / 2000S	DSD6HFFUK	DS6HFFU	27
	EVA-2500 / 3000	DSD8HFFUK	DS8HFFU	27
	EVO-500 / 750	DSD4HFFUK	DS4HFFU	27
	EVO-1000 / 1500 / 2000	DSD6HFFUK	DS6HFFU	27
	EVS-500 / 750	DSD4HFFUK	DS4HFFU	27
	EVS-1000 / 1500 / 2000 / 2000S	DSD6HFFUK	DS6HFFU	27
	EVS-2500 / 3000	DSD8HFFUK	DS8HFFU	27
	EVCA-750	DSD4HFFUK	DS4HFFU	27
	EVCA-1000, -1500, -2000	DSD6HFFUK	DS6HFFU	27

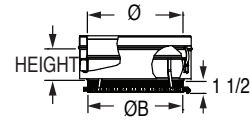
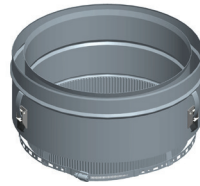
APPLIANCE MANUFACTURER	MODEL V1	DSD ADAPTER CODE	DS ADAPTER CODE	Page
*** If you are unable to find a model or have any questions or comments, please contact our Customer Service Department.				
<b>THERMAL SOLUTIONS</b> (continued)	EVCA-3000	DSD8HFFUK	DS8HFFU	27
	EVH-250	DSD5HFFUK	DS5HFFU	27
	EVH-500	DSD6HFFUK	DS6HFFU	27
	EVH-750	DSD7HFFUK	DS7HFFU	27
	EVH-1000	DSD9HFFUK	DS9HFFU	27
	EVH-1500	DSD10HFFUK	DS10HFFU	27
	EVH-2000	DSD12HFFUK	DS12HFFU	27
	Evolution EV-2000S	DSD6HFFUK	DS6HFFU	27
	Evolution EV-2500 / EV-3000	DSD8HFFUK	DS8HFFU	27
	Solaris			N/A
	SOL-300	DSD4UNIBAOUK	DS4UNIBAOU	19
	SOL-500	DSD6UNIBAOUK	DS6UNIBAOU	19
	SOL-750	DSD8UNIBAOUK	DS8UNIBAOU	19
	SOL-1000	DSD8UNIBAOUK	DS8UNIBAOU	19
	SOL-1250	DSD10UNIBAOUK	DS10UNIBAOU	19
	SOL-1500	DSD10UNIBAOUK	DS10UNIBAOU	19
	<b>THERMO DYNAMICS</b>	LMGD - All Models	DSD4UNIBAUk	DS4UNIBAU
CWL-GS 120 / 140 / 160 Series		DSD5UNIBAOUK	DS5UNIBAOU	19
LMD 75 / 100 / 110		DSD5UNIBAOUK	DS5UNIBAOU	19
<b>U.S. BOILER</b>	ESC series	DSDØFFNSAU	DSØFFNSAU	24-25
<b>UTICA</b>	DV 150 / 200	DSD4HFFUK	DS4HFFU	27
<b>VAILLANT</b>	GA92160PV	DSD4UNIBAUk	DS4UNIBAU	19
<b>VIEDSMANN</b>	VITOGAS 100 GS 10-72	DSD8UNIBAOUK	DS8UNIBAOU	19
	VITOGAS 100 GS 10-84	DSD9UNIBAOUK	DS9UNIBAOU	19
	VITOGAS 100 GS 10-96	DSD10UNIBAOUK	DS10UNIBAOU	19
	VITODEN WB1B 26, 35		DS3VDSB2HA80U	N/A
	VITODEN WB2B 19, 26, 35, 45, 60		DS3VDSB2HA80U	N/A
	VITODEN B1HA 26, 35		DS3VDSB2HA80U	N/A
	VITODEN B1KA 35		DS3VDSB2HA80U	N/A
	VITODEN B2TA 19, 35		DS3VDSB2HA80U	N/A
	VITODEN B2TB 19, 35		DS3VDSB2HA80U	N/A
	VITODEN B2HA 19, 28, 35, 45, 60		DS3VDSB2HA80U	N/A
	VITODEN B2HB 19, 26, 35, 45, 57		DS3VDSB2HA80U	N/A
	VITODEN WB2B 80, 105		DS4VDSB2HA110U	N/A
	VITODEN B2HA 80, 88, 100, 112, 150		DS4VDSB2HA110U	N/A
	Vertomat VSB-17 / VSB-22 / VSB-28	DSD8UNIBAOUK	DS8UNIBAOU	N/A
	Vertomat VSB-37 / VSB-46 / VSB-57	DSD10UNIBAOUK	DS10UNIBAOU	N/A
	Vertomat VSB-72 / VSB-89	DSD12UNIBAOUK	DS12UNIBAOU	N/A
	VITOCRODSAL CM2 186, 246, 311	DSD8VDSCM2UK	DS8VDSCM2U	31-32
	VITOCRODSAL CM2 400, 500, 620, 620 TX	DSD10VDSCM2UK	DS10VDSCM2U	31-32
	VITOCRODSAL CA3 2.5, 3.0	DSD10VDSCA3UK	DS10VDSCA3U	33
	VITOCRODSAL CA3 3.5, 4.0	DSD12VDSCA3UK	DS12VDSCA3U	33

APPLIANCE MANUFACTURER	MODEL V1	DSD ADAPTER CODE	DS ADAPTER CODE	Page
*** If you are unable to find a model or have any questions or comments, please contact our Customer Service Department.				
<b>VIEDSMANN (continued)</b>	VITOCRODSAL CA3 5.0, 6.0	DSD16VDSKA3UK	DS16VDSKA3U	33
	VITOCRODSAL CT3-17, -22, -28	DSD8VDSCT3UK	DS8VDSCT3U	32
	VITOCRODSAL CT3-37, -46, -57	DSD10VDSCT3UK	DS10VDSCT3U	32
	VITOCRODSAL CT3-72, -89	DSD12VDSCT3UK	DS12VDSCT3U	32
	VITOCRODSAL CU3A 26, 35		DS3VDSB2HA80U	N/A
	VITOCRODSAL CU3A 45, 57		DS4VDSB2HA110U	N/A
	ViticroDSal 300 CT3-72 / CT3-89	DSD12VDSCT3UK	DS12VDSCT3U	N/A
	Vitorond 200 VD2A	DSD8VDSVD2UK	DS8VDSVD2U	32-33
	Vitorond 200 VD2	DSD12VDSVD2UK	DS12VDSVD2U	32-33
<b>WEBEN JARCO</b>	Vision 3000 750	DSD6HFFUK	DS6HFFU	27
	Vision 3000 1000	DSD8HFFUK	DS8HFFU	27
	Vision 3000 1500 / 2000	DSD10HFFUK	DS10HFFU	27
	E-Finiti E_040 / E_080	DSD4UNIBAOUK	DS4UNIBAOU	19
	E-Finiti E_075 / E_100	DSD6UNIBAOUK	DS6UNIBAOU	19
	E-Finiti E_125 / E_150	DSD8UNIBAOUK	DS8UNIBAOU	19
	E-Finiti E_175 / E_200	DSD10UNIBAOUK	DS10UNIBAOU	19
<b>WEIL MCLAIN</b>	SF 500, 750	DSD6PVCUK	DS6PVCU	30
<b>WEIL MCLAIN (continued)</b>	SF 1000	DSD10MM250UK (reducer may be necessary based on vent categorization)	DS10MM250U (reducer may be necessary based on vent categorization)	34
	SF 1500, 2000	DSD10MM250UK (reducer may be necessary based on vent categorization)	DS10MM250U (reducer may be necessary based on vent categorization)	34
	SLIMFIT	DSDØSFEXØUK	DSØSFEXØU	N/A
	EVG 70, 110, 155	DSD3PVCUK	DS3PVCU	N/A
	EVG 220, 299, 399	DSD4PVCUK	DS4PVCU	30
	UG 80, 105, 155	DSD3PVCUK		N/A
	UG 230, 299, 399	DSD4PVCUK	DS4PVCU	30
<b>WESTINGHOUSE</b>	see NORDYNE			N/A
<b>METRIC ADAPTERS SECURE SEAL / DURASEAL</b>	Metric adapter 160 mm 6" DS	DSD6MM160UK	DS6MM160U	34
	Metric adapter 161 mm 6" DS	DSD6MM161UK	DS6MM161U	34
	Metric adapter 197 mm 8" DS	DSD8MM197UK	DS8MM197U	34
	Metric adapter 200 mm 8" DS	DSD8MM200UK	DS8MM200U	34
	Metric adapter 201 mm 8" DS	DSD8MM201UK	DS8MM201U	34
	Metric adapter 248 mm 10" DS	DSD10MM248UK	DS10MM248U	34
	Metric adapter 250 mm 10" DS	DSD10MM250UK	DS10MM250U	34
	Metric adapter 251 mm 10" DS	DSD10MM251UK	DS10MM251U	34
	Metric adapter 299 mm 12" DS	DSD12MM299UK	DS12MM299U	34
	Metric adapter 300 mm 12" DS	DSD12MM300UK	DS12MM300U	34
	Metric adapter 349 mm 14" DS	DSD14MM349UK	DS14MM349U	34
	Metric adapter 350 mm 14" DS	DSD14MM350UK	DS14MM350U	34
	Metric adapter 400 mm 16" DS	DSD16MM400UK	DS16MM400U	34
	Metric adapter 450 mm 18" DS	DSD18MM450UK	DS18MM450U	34
	Metric adapter 451 mm 18" DS	DSD18MM451UK	DS18MM451U	34

# DSD & DS Boiler Adapters

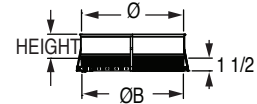
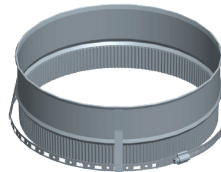
## UNIVERSAL Interior Application DSD

Ø	ØB (O.D)	HEIGHT	Product Code
3" to 24"	3 7/8" to 23 7/8"	4 1/8"	DSDØUNIBAUk



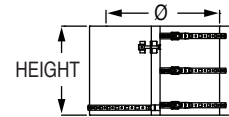
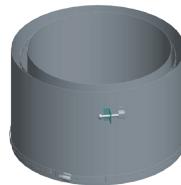
## UNIVERSAL Interior Application DS

Ø	ØB (O.D)	HEIGHT	Product Code
3" to 24"	3 7/8" to 23 7/8"	2 3/4"	DSØUNIBAU



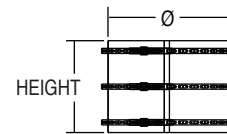
## UNIVERSAL Exterior Application DSD

Ø	HEIGHT	Product Code
3" to 24"	9"	DSDØUNIBAOUk



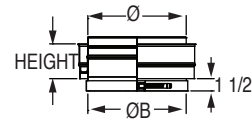
## UNIVERSAL Exterior Application DS

Ø	HEIGHT	Product Code
3" to 24"	9"	DSØUNIBAOU



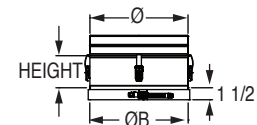
## UNIVERSAL Male Exterior Application DSD

Ø	ØB (O.D)	HEIGHT	Product Code
3" to 24"	4 1/16" to 24 1/16"	4 1/4"	DSDØUNIBAOMUK



## UNIVERSAL Male Exterior Application DS

Ø	ØB (O.D)	HEIGHT	Product Code
3" to 24"	4 1/16" to 24 1/16"	3 7/8"	DSØUNIBAOUMU

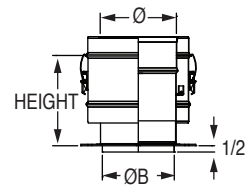
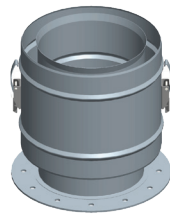




# DSD & DS Boiler Adapters

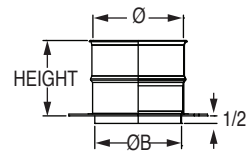
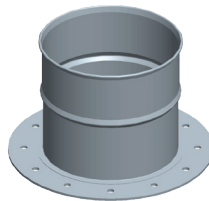
## AERCO BMK Adapter DSD

Ø	ØB (O.D)	HEIGHT	Product Code
6"	5.77"	8"	DSD6AERBMKUK
8"	7.77"	8"	DSD8AERBMKUK
12"	11.77"	8"	DSD12AERBMKUK
14"	13.77"	8"	DSD14AERBMKUK



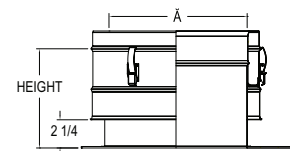
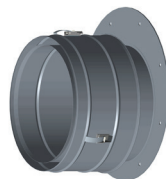
## AERCO BMK Adapter DS

Ø	ØB (O.D)	HEIGHT	Product Code
6"	5.77"	5 5/8"	DS6AERBMKU
8"	7.77"	5 5/8"	DS8AERBMKU
12"	11.77"	5 5/8"	DS12AERBMKU
14"	13.77"	5 5/8"	DS14AERBMKU



## AERCO BMK Excentric Adapter DSD

Ø	ØB (O.D)	HEIGHT	Product Code
12"	"	8 3/8"	DSDØAERBMKOFFUK



## AERCO BMK Excentric Adapter DS

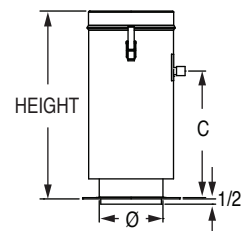
Ø	ØB (O.D)	HEIGHT	Product Code
12"	"	5 1/8"	DSØAERBMKOFFU



## AERCO KC Adapter DSD

Ø	ØB (O.D)	C	HEIGHT	Product Code
6"	5.77"	12 1/8"	16 1/4"	DSD6AERKCUK

Test Port Ø6", 1/2 NPT

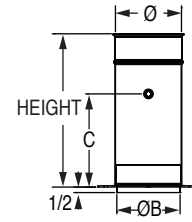
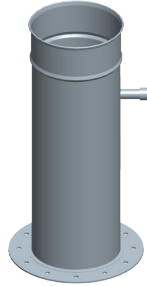


# DSD & DS Boiler Adapters

## AERCO KC Adapter DS

Ø	ØB (O.D)	C	HEIGHT	Product Code
6"	5.77"	12 1/8"	17 5/8"	DS6AERKCU

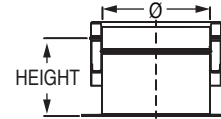
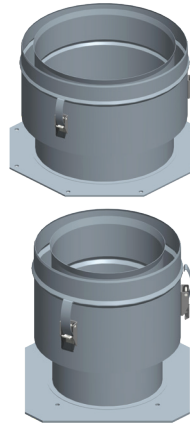
Test Port Ø6", 1/2 NPT



## AERCO MLX EXT Adapter DSD

Ø	HEIGHT	Product Code
4"	7 7/32"	DSD4AERMLXUK
6"	7 7/32"	DSD6AERMLXUK
10"	7 7/32"	DSD10AERMLXUK
12"	7 7/32"	DSD12AERMLXUK

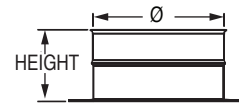
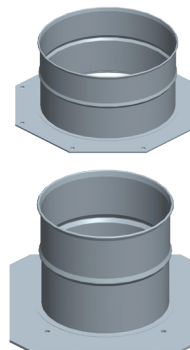
Flange Shape Depends on Diameter



## AERCO MLX EXT Adapter DS

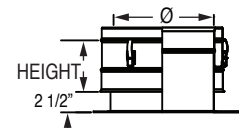
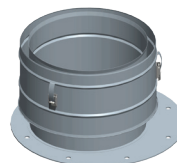
Ø	HEIGHT	Product Code
4"	5 17/32"	DS4AERMLXU
6"	5 17/32"	DS6AERMLXU
10"	5 17/32"	DS10AERMLXU
12"	5 17/32"	DS12AERMLXU

Flange Shape Depends on Diameter



## AERCO BMK Eccentric Adapter DSD

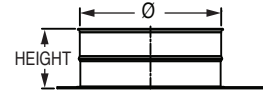
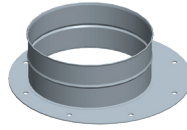
Ø	HEIGHT	Product Code
12"	8 3/8"	DSDØAERBMKOFFUK



# DSD & DS Boiler Adapters

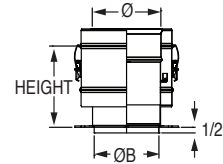
## AERCO BMK Eccentric Adapter DS

Ø	HEIGHT	Product Code
12"	5 1/8"	DSØAERBMKOFFU



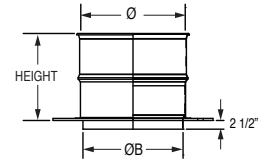
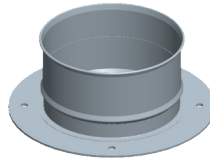
## AERCO Innovation Adapter DSD

Ø	ØB (O.D.)	HEIGHT	Product Code
6"	5.77"	7 1/4"	DSD6AERBMKUK



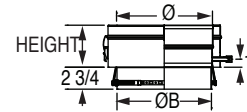
## AERCO Innovation Adapter DS

Ø	ØB (O.D.)	HEIGHT	Product Code
6"	5.77"	5 5/8"	DS6AERBMKU



## BOSCH Adapter DSD

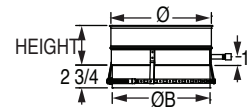
Ø	ØB (O.D.)	HEIGHT	Product Code
8"	7 7/8"	3 3/4"	DSD8BOSCHUK
10"	9 27/32"	3 3/4"	DSD10BOSCHUK
12"	11 13/16"	3 3/4"	DSD12BOSCHUK
14"	13 25/32"	3 3/4"	DSD14BOSCHUK
16"	15 3/4"	3 3/4"	DSD16BOSCHUK
18"	17 23/32"	3 3/4"	DSD18BOSCHUK



Test Port Ø8"-Ø18", 1/2 NPT

## BOSCH Adapter DS

Ø	ØB (O.D.)	HEIGHT	Product Code
8"	7 7/8"	4 3/4"	DS8BOSCHU
10"	9 27/32"	4 3/4"	DS10BOSCHU
12"	11 13/16"	4 3/4"	DS12BOSCHU
14"	13 25/32"	4 3/4"	DS14BOSCHU
16"	15 3/4"	4 3/4"	DS16BOSCHU
18"	17 23/32"	4 3/4"	DS18BOSCHU

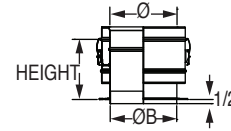
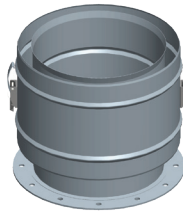


Test Port Ø8"-Ø18", 1/2 NPT

# DSD & DS Boiler Adapters

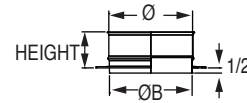
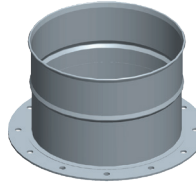
## BRYAN Triple Flex Adapter DSD

Ø	ØB (O.D)	HEIGHT	Product Code
8"	7.92"	7 1/4"	DSD8BRYANT-FUK



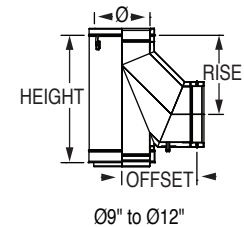
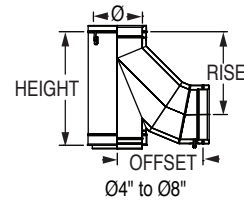
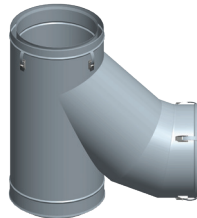
## BRYAN Triple Flex Adapter DS

Ø	ØB (O.D)	HEIGHT	Product Code
8"	7.92"	5 5/8"	DS8BRYANTFU



## CAMUS Boot Tee DSD (see note)

Ø	RISE	OFFSET	HEIGHT	Product Code
4"	10"	10 3/4"	14 1/2"	DSD4BTCAMUSUK
5"	11"	11 5/8"	16 1/2"	DSD5BTCAMUSUK
6"	12 1/4"	13 1/8"	17 1/2"	DSD6BTCAMUSUK
7"	13 1/4"	14 1/8"	19 1/2"	DSD7BTCAMUSUK
8"	14 3/8"	15 3/8"	20 1/2"	DSD8BTCAMUSUK
9"	14 1/4"	13 5/8"	23 1/2"	DSD9BTCAMUSUK
10"	15 5/8"	14 1/2"	25 1/2"	DSD10BTCAMUSUK
12"	17"	16 1/8"	27 1/2"	DSD12BTCAMUSUK



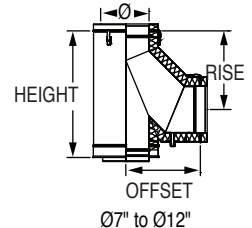
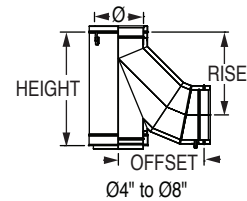
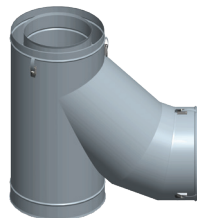
Note: Must be installed with a DSDØUNIBAOMUK

Drain Ø4" and Ø5", 1/2 NPT

Drain Ø6"-Ø12", 1 NPT

## Camus Boot Tee DSID

Ø	RISE	OFFSET	HEIGHT	Product Code
4"	12 9/32"	13 3/32"	18 15/16"	DSID4BTCAMUSUK
5"	13 7/32"	14 5/32"	20 15/16"	DSID5BTCAMUSUK
6"	14 3/8"	12 7/8"	21 15/16"	DSID6BTCAMUSUK
7"	14 5/16"	13 21/32"	24 15/16"	DSID7BTCAMUSUK
8"	15 7/32"	14 19/32"	26 15/16"	DSID8BTCAMUSUK
10"	17 1/16"	16 3/16"	28 15/16"	DSID10BTCAMUSUK
12"	18 7/8"	18 1/4"	31 15/16"	DSID12BTCAMUSUK



Drain Ø4" and Ø5", 1/2 NPT

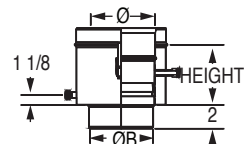
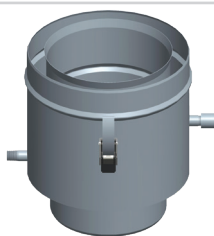
Drain Ø6"-Ø12", 1 NPT

# DSD & DS Boiler Adapters

## DEDIETRICH C230 Adapter DSD

Ø	ØB (O.D)	HEIGHT	Product Code
6"	5.77"	5 1/4"	DSD6DDRC230UK

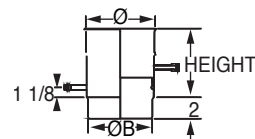
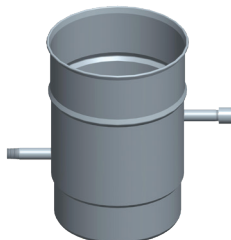
Test Port Ø6", 1/2 NPT  
 Drain Ø6", 1 NPT



## DEDIETRICH C230 Adapter DS

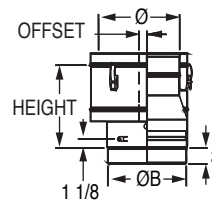
Ø	ØB (O.D)	HEIGHT	Product Code
6"	5.77"	7"	DS6DDRC230U

Test Port Ø6", 1/2 NPT  
 Drain Ø6", 1 NPT



## DEDIETRICH C310 Offset Adapter DSD

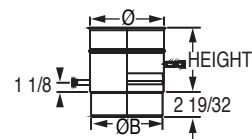
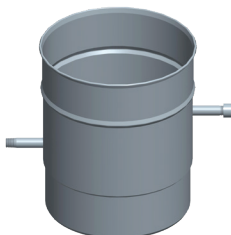
Ø	ØB (O.D)	HEIGHT	OFFSET	Product Code
10"	9.8"	12 3/8"	1"	DSD10DDRC310UK



## DEDIETRICH C310 Offset Adapter DS

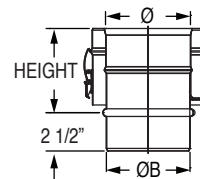
Ø	ØB (O.D)	HEIGHT	Product Code
10"	9.8"	9"	DS10DDRC310U

Test Port Ø10", 1/2 NPT  
 Drain Ø10", 1 NPT



## DURAVENT FasNSeal Adapter DSD

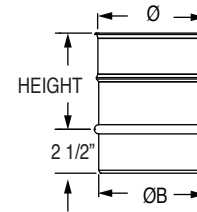
Ø	ØB (O.D)	HEIGHT	Product Code
4" to 12"	3 15/16" to 11 15/16"	5 1/2"	DSDØFFNSAU



# DSD & DS Boiler Adapters

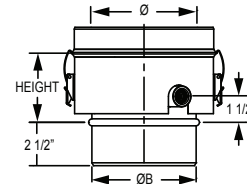
## DURAVENT FasNSeal Adapter DS

Ø	ØB (O.D)	HEIGHT	Product Code
4" to 12"	3 15/16" to 11 15/16"	5 1/2"	DSØFFNSAU



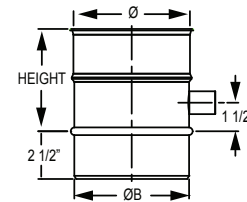
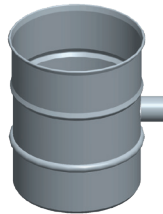
## DURAVENT FasNSeal Female DSD with 1/2 FNPT Test Port

MODEL	Ø	ØB (O.D)	HEIGHT	Product Code
Double-Wall	4"-12"	3 15/16" - 11 15/16"	5 3/8"	DSDØFFNSTP1/2UK
Single-Wall	4"-12"	3 15/16" - 11 15/16"	5 3/8"	DSDØFFNSTP1/2UK



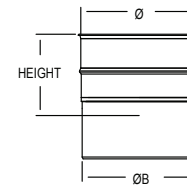
## DURAVENT FasNSeal Female DS with 1/2 FNPT Test Port

MODEL	Ø	ØB (O.D)	HEIGHT	Product Code
Double-Wall	4"-12"	3 15/16" - 11 15/16"	5 3/8"	DSØFFNSTP1/2U
Single-Wall	4"-12"	3 15/16" - 11 15/16"	5 3/8"	DSØFFNSTP1/2U



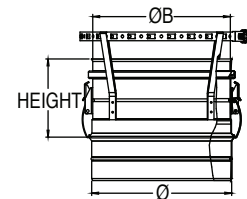
## DURAVENT PolyPro Female Adapter DS

Ø	ØB (O.D)	HEIGHT	Product Code
4"	100mm	5 3/8"	DS4POLYPROFAU
5"	130mm	5 3/8"	DS5POLYPROFAU
6"	150mm	5 3/8"	DS6POLYPROFAU
8"	200mm	5 3/8"	DS8POLYPROFAU



## DURAVENT PolyPro Male Adapter DS

Ø	ØB (O.D)	HEIGHT	Product Code
4"	100mm	3 3/8"	DS4POLYPROMAU
5"	130mm	3 3/8"	DS5POLYPROMAU
6"	150mm	3 3/8"	DS6POLYPROMAU
8"	200mm	3 3/8"	DS8POLYPROMAU

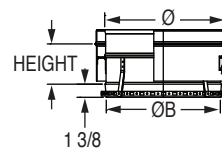
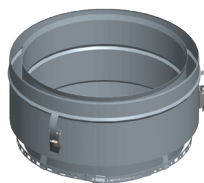




# DSD & DS Boiler Adapters

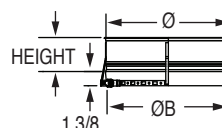
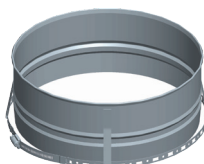
## FULTON Pulse Adapter DSD

Ø	ØB (O.D)	HEIGHT	Product Code
4"	4"	4 1/4"	DSD4FULTUK
6"	6"	4 1/4"	DSD6FULTUK



## FULTON Pulse Adapter DS

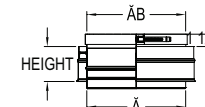
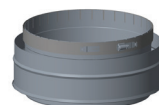
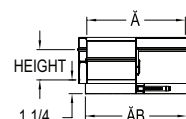
Ø	ØB (O.D)	HEIGHT	Product Code
4"	4"	3 3/8"	DS4FULTU
6"	6"	3 3/8"	DS6FULTU



## FULTON Muffler Adapter Kit DSD

Ø	ØB (O.D)	HEIGHT	Product Code
4" to 24"	4 1/16" to 24 1/16"	4"	DSDØFMAUK

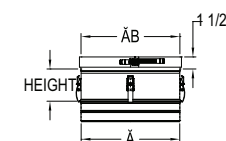
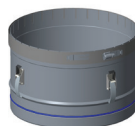
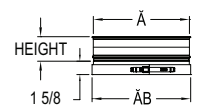
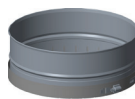
**NOTE: The kit is made of a DSDØFMAUK + DSDØUNIBAOMUK**



## FULTON Muffler Adapter Kit DS

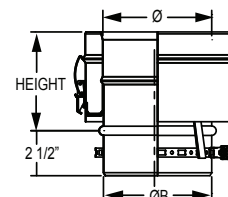
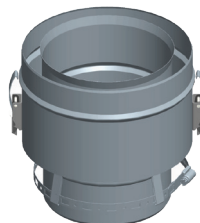
Ø	ØB (O.D)	HEIGHT	Product Code
4" to 24"	4 1/16" to 24 1/16"	3 1/32"	DSØFMAU

**NOTE: The kit is made of a DSØFMAU + DSØUNIBAOMU**



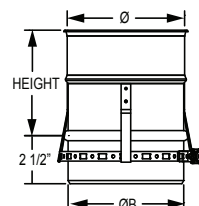
## FULTON Endura Adapter DSD

Ø	ØB (O.D)	HEIGHT	Product Code
6"	5 15/16"	5 1/2"	DSD6FEDRUK
8"	7 15/16"	5 1/2"	DSD8FEDRUK



## FULTON Endura Adapter DS

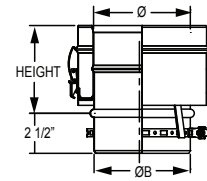
Ø	ØB (O.D)	HEIGHT	Product Code
6"	5 15/16"	5 1/2"	DS6FEDRU
8"	7 15/16"	5 1/2"	DS8FEDRU



# DSD & DS Boiler Adapters

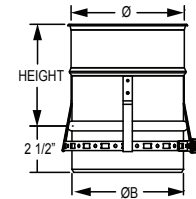
## FULTON Vantage Adapter DSD

Ø	ØB (O.D)	HEIGHT	Product Code
10"	9 11/16"	5 1/2"	DSD10FVTGUK
12"	11 11/16"	5 1/2"	DSD12FVTGUK
14"	13 11/16"	5 1/2"	DSD14FVTGUK



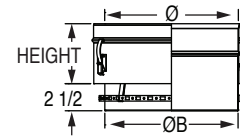
## FULTON Vantage Adapter DS

Ø	ØB (O.D)	HEIGHT	Product Code
10"	9 11/16"	5 1/2"	DS10FVTGU
12"	11 11/16"	5 1/2"	DS12FVTGU
14"	13 11/16"	5 1/2"	DS14FVTGU



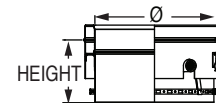
## HEATFAB Female Adapter DSD

Ø	ØB (O.D)	HEIGHT	Product Code
4" to 24"	4 1/16" to 24 1/16"	3 5/8"	DSDØHFFUK



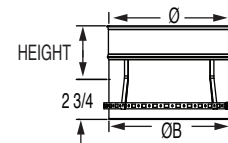
## HEATFAB Female Adapter DSD with FNPT Test Port

Ø	ØB (O.D)	HEIGHT	Product Code
5" to 8"	5 1/16" to 8 1/16"	3 5/8"	DSDØHFF1/2FIPTUK



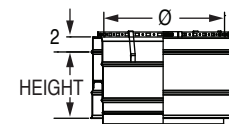
## HEATFAB Female Adapter DS

Ø	ØB (O.D)	HEIGHT	Product Code
4" to 24"	4.04" to 24.04"	5"	DSØHFFU



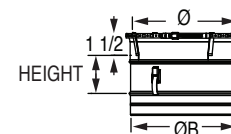
## HEATFAB Male Adapter DSD

Ø	ØB (O.D)	HEIGHT	Product Code
4" to 24"	4 1/16" to 24 1/16"	6 3/8"	DSDØHFMUK



## HEATFAB Male Adapter DS

Ø	ØB (O.D)	HEIGHT	Product Code
4" to 24"	4.04" to 24.04"	7"	DSØHFMU

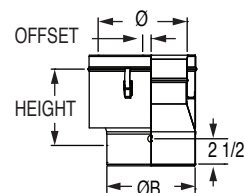


# DSD & DS Boiler Adapters

## LOCHINVAR Crest Offset Adapter DSD

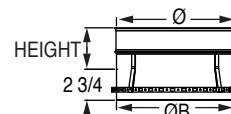
Ø	ØB (O.D)	HEIGHT	OFFSET	Product Code
7" to 14"	7.04" to 14.04"	8 3/8"	1"	DSDØCRESTUK

Test Port Ø7"-Ø14", 1/2 NPT



## LOCHINVAR Crest Offset Adapter DS

Ø	ØB (O.D)	HEIGHT	Product Code
4" to 24"	4.04" to 24.04"	8 3/8"	DSØCRESTU



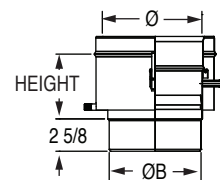
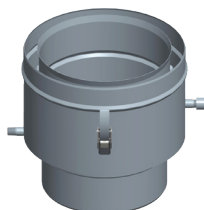
## PATTERSON KELLY Mach Adapter DSD

Ø	ØB (O.D)	HEIGHT	Product Code
4"	3.90"	7 1/2"	DSD4PKMACHUK
5"	5.10"	7 1/2"	DSD5PKMACHUK
6"	5.90"	7 1/2"	DSD6PKMACHUK
8"	7.80"	7 1/2"	DSD8PKMACHUK

Drain Ø4"-Ø5", 1/2 NPT

Drain Ø6"-Ø8", 1 NPT

Test Port Ø4"-Ø8", 1/2 NPT



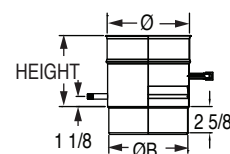
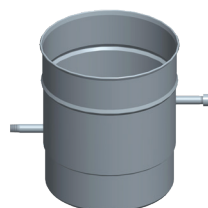
## PATTERSON KELLY Mach Adapter DS

Ø	ØB (O.D)	HEIGHT	Product Code
4"	3.90"	9"	DS4PKMACHU
5"	5.10"	9"	DS5PKMACHU
6"	5.90"	9"	DS6PKMACHU
8"	7.80"	9"	DS8PKMACHU

Drain Ø4"-Ø5", 1/2 NPT

Drain Ø6"-Ø8", 1 NPT

Test Port Ø4"-Ø8", 1/2 NPT

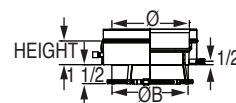
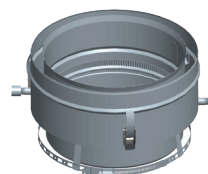


## PATTERSON KELLY Mach Short Adapter DSD

Ø	ØB (O.D)	HEIGHT	Product Code
10"	9.80"	3 1/8"	DSD9.8PKSMACHUK

Drain Ø10", 1 NPT

Test Port Ø10", 1/2 NPT

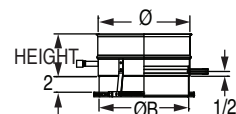
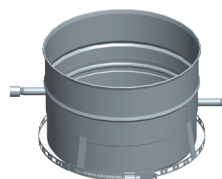


## PATTERSON KELLY Mach Short Adapter DS

Ø	ØB (O.D)	HEIGHT	Product Code
10"	9.80"	4 5/8"	DS9.8PKSMACHU

Drain Ø10", 1 NPT

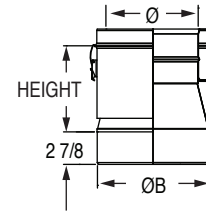
Test Port Ø10", 1/2 NPT



# DSD & DS Boiler Adapters

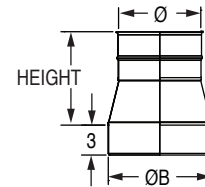
## PATTERSON KELLY Mach Reducer Adapter DSD

Ø	ØB (O.D)	HEIGHT	Product Code
8"	9.8"	7 3/4"	DSD9.8PKMACH8UK
6"	9.8"	12 3/4"	DSD9.8PKMACH6UK



## PATTERSON KELLY Mach Reducer Adapter DS

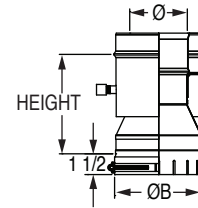
Ø	ØB (O.D)	HEIGHT	Product Code
8"	9.8"	9 1/8"	DS9.8PKMACH8U
6"	9.8"	14 1/8"	DS9.8PKMACH6U



## PATTERSON KELLY MODU-FIRE Reducer Adaptor DSD

Ø	ØB (O.D)	HEIGHT	Product Code
4"	6 1/16"	7"	DSD6PKMF4UK
5"	6 1/16"	7"	DSD6PKMF5UK

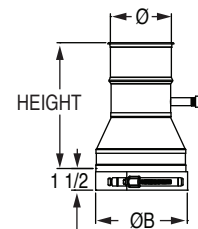
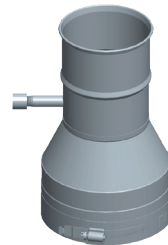
Test Port Ø4"-Ø5", 1/2 NPT



## PATTERSON KELLY MODU-FIRE Reducer Adaptor DS

Ø	ØB (O.D)	HEIGHT	Product Code
4"	6 1/16"	8 1/2"	DS6PKMF4U
5"	6 1/16"	8 1/2"	DS6PKMF5U

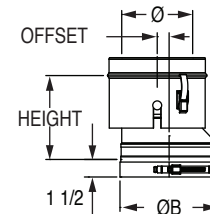
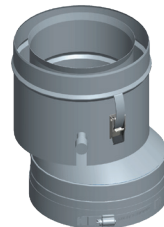
Test Port Ø4"-Ø5", 1/2 NPT



## PATTERSON KELLY MODU-FIRE Reducer Offset Adaptor DSD

Ø	ØB (O.D)	HEIGHT	OFFSET	Product Code
6"	8 1/16"	7"	1"	DSD8PKMF6UK
8"	10 1/16"	7"	1"	DSD10PKMF8UK

Test Port Ø6"-Ø8", 1/2 NPT

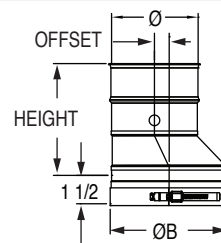


# DSD & DS Boiler Adapters

## PATTERSON KELLY MODU-FIRE Reducer Offset Adaptor DS

Ø	ØB (O.D)	HEIGHT	OFFSET	Product Code
6"	8 1/16"	8 1/2"	1"	DS8PKMF6U
8"	10 1/16"	8 1/2"	1"	DS10PKMF8U

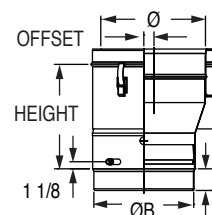
Test Port Ø6"-Ø8", 1/2 NPT



## PATTERSON Kelley Mach Offset Adaptor DSD

Ø	ØB (O.D)	HEIGHT	OFFSET	Product Code
8"	7.77"	12 3/8"	1"	DSD8PKMACHOFFUK

Drain Ø8", 1 NPT

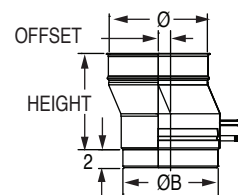


## PATTERSON Kelley Mach Offset Adaptor DS

Ø	ØB (O.D)	HEIGHT	OFFSET	Product Code
8"	7.77"	11 7/8"	1"	DS8PKMACHOFFU

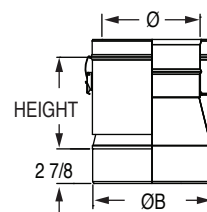
Drain Ø8", 1 NPT

Test Port Ø8", 1/2 NPT



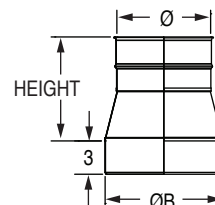
## PVC/CPVC Adaptor DSD

Ø	ØB (O.D)	HEIGHT	Product Code
4"	4 1/2"	4 1/2"	DSD4PVCUK
5"	5 9/16"	4 1/2"	DSD5PVCUK
6"	6 5/8"	4 1/2"	DSD6PVCUK
8"	8 5/8"	4 1/2"	DSD8PVCUK



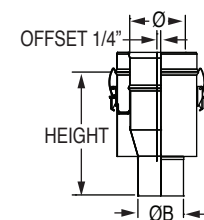
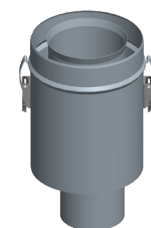
## PVC/CPVC Adaptor DS

Ø	ØB (O.D)	HEIGHT	Product Code
4"	4 1/2"	5"	DS4PVCU
5"	5 9/16"	5"	DS5PVCU
6"	6 5/8"	5"	DS6PVCU
8"	8 5/8"	5"	DS8PVCU



## PVC/CPVC Offset Adaptor DSD

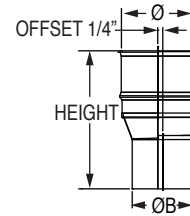
Ø	ØB (O.D)	HEIGHT	Product Code
4"	3 1/2"	9 13/32"	DSD3.5PVCUK



# DSD & DS Boiler Adapters

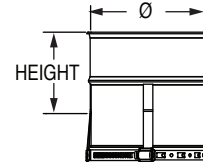
## PVC/CPVC Offset Adaptor DS

Ø	ØB (O.D)	HEIGHT	Product Code
4"	3 1/2"	7 7/8"	DS3.5PVCU



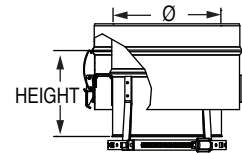
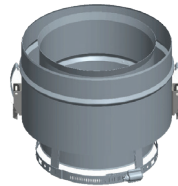
## PVI Adaptor DS

Ø	ØB (O.D)	HEIGHT	Product Code
6"	5 7/8"	4 25/32"	DS6PVIU



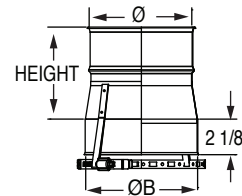
## PVI Adaptor DSD

Ø	ØB (O.D)	HEIGHT	Product Code
6"	5 7/8"	3 9/16"	DSD6PVIUK



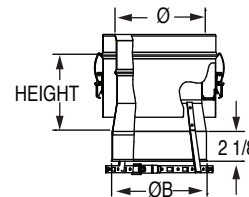
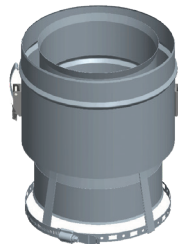
## PVI-PVC Adapter DS

Ø	ØB (O.D)	HEIGHT	Product Code
6"	6 5/8"	5 1/2"	DS6PVIPVCU



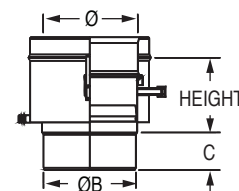
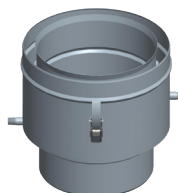
## PVI-PVC Adapter DSD

Ø	ØB (O.D)	HEIGHT	Product Code
6"	6 5/8"	7 7/8"	DSD6PVIPVCUK



## VIEDSMANN VitocroDSal 200 (CM2) DSD

Ø	ØB (O.D)	C	HEIGHT	Product Code
8"	7.87"	4"	5 5/8"	DSD8VDSCM2UK
10"	9.94"	4"	5 5/8"	DSD10VDSCM2UK



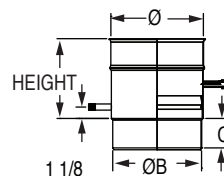
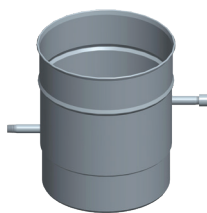
Drain Ø8"-Ø10", 1 NPT  
 Test Port Ø8"-Ø10", 1/2 NPT

# DSD & DS Boiler Adapters

## VIEDSMANN VitcroDSal 200 (CM2) DS

Ø	ØB (O.D)	C	HEIGHT	Product Code
8"	7.87"	4"	7"	DS8VDSCM2U
10"	9.94"	4"	7"	DS10VDSM2U

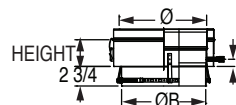
Drain Ø8"-Ø10", 1 NPT  
 Test Port Ø8"-Ø10", 1/2 NPT



## VIEDSMANN VitcroDSal 300 (CT3) DSD

Ø	ØB (O.D)	HEIGHT	Product Code
8"	7 7/8"	3 3/4"	DSD8VDSCT3UK
10"	9 27/32"	3 3/4"	DSD10VDSCT3UK
12"	11 13/16"	3 3/4"	DSD12VDSCT3UK

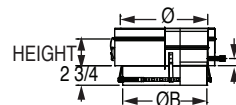
Test Port Ø8"-Ø12", 1/2 NPT



## VIEDSMANN VitcroDSal 300 (CT3) DS

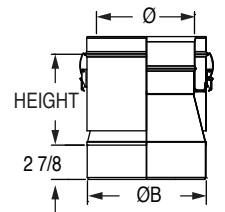
Ø	ØB (O.D)	HEIGHT	Product Code
8"	7 7/8"	4 3/4"	DS8VDSCT3U
10"	9 27/32"	4 3/4"	DS10VDSCT3U
12"	11 13/16"	4 3/4"	DS12VDSCT3U

Test Port Ø8"-Ø12", 1/2 NPT



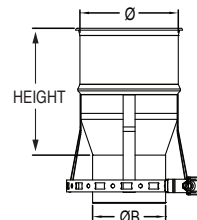
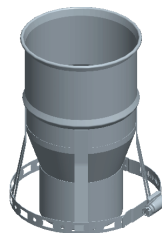
## VIEDSMANN Vitodens WB2B DSD

Ø	ØB (O.D)	HEIGHT	Product Code
4"	4.29"	7 3/4"	DSD4VITOUK



## VIEDSMANN Vitodens 200 W B2HA DS

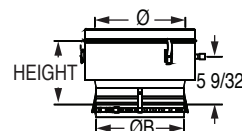
Ø	ØB (O.D)	HEIGHT	Product Code
4"	3 1/16"	5 5/16"	DS4VDSB2HA80U
4"	4 1/4"	5 5/16"	DS4VDSB2HA110U



## VIEDSMANN Vitorond 200 DSD

Ø	ØB (O.D)	HEIGHT	Product Code
8"	6.97"	8 1/32"	DSD8VDSVD2UK
12"	11.16"	8 1/32"	DSD12VDSVD2UK

Port Ø8"-Ø12", 1/2 NPT



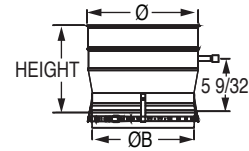


# DSD & DS Boiler Adapters

## VIEDSMANN Vitorond 200 DS

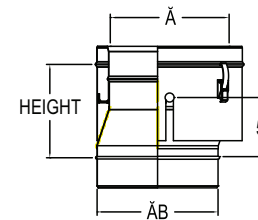
Ø	ØB (O.D)	HEIGHT	Product Code
8"	6.97"	9 13/32"	DS8VDSVD2U
12"	11.16"	9 13/32"	DS12VDSVD2U

Test Port Ø8"-Ø12", 1/2 NPT



## VIEDSMANN CA3 DSD

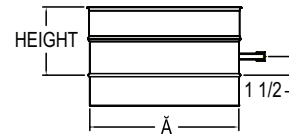
Ø	Effective length (in.)	Ø	ØB (O.D)	Product Code
10"	7 3/4"	9 29/32"	9 15/16"	DSD10VDSCA3UK
12"	7 3/4"	11 31/32"	12"	DSD12VDSCA3UK
16"	7 3/4"	15 31/32"	16"	DSD16VDSCA3UK



## VIEDSMANN CA3 DS

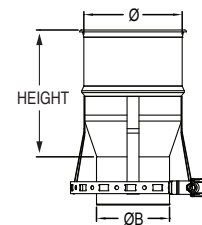
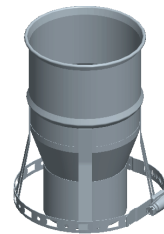
Ø	Effective length (in.)	Ø	ØB (O.D)	Product Code
10"	5 1/2"	9 29/32"	9 15/16"	DS10VDSCA3U
12"	5 1/2"	11 31/32"	12"	DS12VDSCA3U
16"	5 1/2"	15 31/32"	16"	DS16VDSCA3U

Test Port Ø10"-Ø16", 1/2 NPT



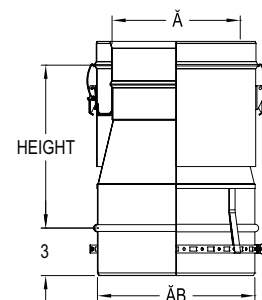
## VIEDSMANN Vitodens CU3A DS

Ø	ØB (O.D)	HEIGHT	Product Code
4"	4 1/4"	5 5/16"	DS4VDSCU3A110U



## WEIL MCLAIN Slimfit DSD

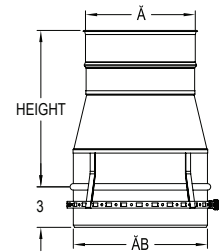
Ø	ØB (O.D)	HEIGHT	Product Code
6"	6 5/8"	7 5/32"	DSD6SFEX6UK
6"	9 13/16"	12 5/32"	DSD6SFEX10UK
8"	6 5/8"	10 5/32"	DSD8SFEX6UK
8"	9 13/16"	10 5/32"	DSD8SFEX10UK
10"	9 13/16"	7 5/32"	DSD10SFEX10UK



# DSD & DS Boiler Adapters

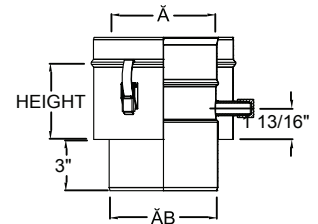
## WEIL MCLAIN Slimfit DS

Ø	ØB (O.D)	HEIGHT	Product Code
6"	6 5/8"	7 1/2"	DS6SFEX6U
6"	9 13/16"	12 1/2"	DS6SFEX10U
8"	6 5/8"	10 1/2"	DS8SFEX6U
8"	9 13/16"	10 1/2"	DS8SFEX10U
10"	9 13/16"	7 1/2"	DS10SFEX10U



## METRIC ADAPTERS SECURE SEAL/DURASEAL DSD

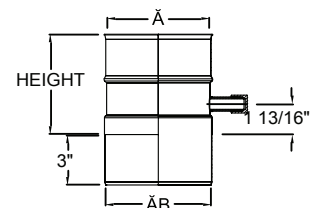
Ø	ØB (O.D)	HEIGHT	Product Code
6"	6.28	4 1/2"	DSD6MM161UK
8"	7.69		DSD8MM197UK
8"	7.84		DSD8MM201UK
10"	9.69		DSD10MM248UK
10"	9.78		DSD10MM250UK
10"	9.81		DSD10MM251UK
12"	11.69		DSD12MM299UK
12"	11.75		DSD12MM300UK
14"	13.69		DSD14MM349UK
14"	13.72		DSD14MM350UK
16"	15.69		DSD16MM400UK
18"	17.66		DSD18MM450UK
18"	17.69		DSD18MM451UK



Test Port Ø6"-Ø18", 1/2 NPT

## METRIC ADAPTERS SECURE SEAL/DURASEAL DS

Ø	ØB (O.D)	HEIGHT	Product Code
6"	6.28	6"	DS6MM161U
8"	7.69		DS8MM197U
8"	7.84		DS8MM201U
10"	9.69		DS10MM248U
10"	9.78		DS10MM250U
10"	9.81		DS10MM251U
12"	11.69		DS12MM299U
12"	11.75		DS12MM300U
14"	13.69		DS14MM349U
14"	13.72		DS14MM350U
16"	15.69		DS16MM400U
18"	17.66		DS18MM450U
18"	17.69		DS18MM451U



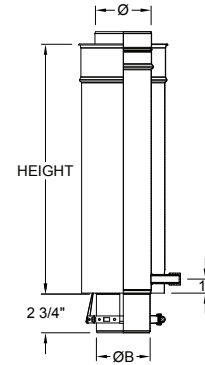
Test Port Ø6"-Ø18", 1/2 NPT

# DSD & DS Boiler Adapters

## CAMUS DYNAFLAME Adapter

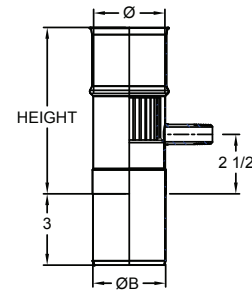
Ø	ØB (O.D.)	HEIGHT	Product Code
6"	6.28"	17 3/4"	DSD4DYNAFLAMEUK
8"	7.69"	15 3/8"	DSD6DYNAFLAMEUK

Ø3/8"NPT thread Test Port



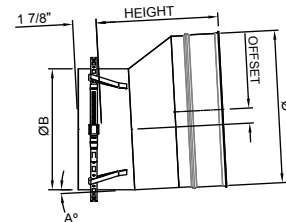
## CAREL Adapter

Ø	ØB (O.D.)	HEIGHT	Product Code
3"	3 1/16"	7"	DS3ADUGU



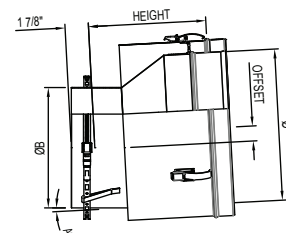
## Fulton EDR 2000/3000, 4000 & 5000/6000 DS Adapter

Ø	ØB (O.D.)	Height	Offset	A	Product Code
8"	5 23/32"	9 7/16"	1 1/8"	0	DS5.7FEDR8U
8"	5 23/32"	9 7/16"	1 1/8"	0	DS5.7FEDR8B
12"	9 5/8"	9 11/16"	1 3/16"	3	DS12FEDRU
12"	9 5/8"	9 11/16"	1 3/16"	3	DS12FEDRB
14"	9 5/8"	9 11/16"	2 3/16"	3	DS14FEDRU
14"	9 5/8"	9 11/16"	2 3/16"	3	DS14FEDRB



## Fulton EDR 2000/3000, 4000 & 5000/6000 DSD Adapter

Ø	ØB (O.D.)	Height	Offset	A	Product Code
8"	5 23/32"	9 3/16"	1 1/8"	0	DSD5.7FEDR8UK
8"	5 23/32"	9 3/16"	1 1/8"	0	DSD5.7FEDR8BK
12"	9 5/8"	9 7/16"	1 3/16"	3	DSD12FEDRUK
12"	9 5/8"	9 7/16"	1 3/16"	3	DSD12FEDRBK
14"	9 5/8"	9 7/16"	2 3/16"	3	DSD14FEDRUK
14"	9 5/8"	9 7/16"	2 3/16"	3	DSD14FEDRBK





BUILD FOR THE FUTURE

Customer Service and Support:

Airmate (USA).....	800.992.8368
Airmate (CAN) .....	888.735.5475
Ameriflow .....	800.252.8467
Amerivent (Retail).....	800.252.8467
Amerivent (Hearth & Wholesale) ....	800.423.4270
Amerivent (Support).....	800.748.0392
AMPCO (USA) .....	800.669.3269
AMPCO (CAN).....	888.735.5475
Duravent .....	800.835.4429
Hart & Cooley.....	800.433.6341
Hart & Cooley (Support) .....	800.748.0392
Heatfab (USA).....	800.772.0739
Heatfab (CAN) .....	800.848.2149
Lima.....	800.423.4270
Milcor .....	800.774.5240
Portals Plus.....	800.774.5240
RPS.....	800.624.8642
Security Chimney (USA).....	800.361.4909
Security Chimney (CAN) .....	800.667.3387
Selkirk (USA) Residential .....	800.992.8368
Selkirk (USA) Commercial.....	800.848.2149
Selkirk (USA) Support.....	800.748.0392
Selkirk (CAN) .....	888.735.5475

Manufacturing & Distribution Centers:

CANADA	
Nobel, ON	Manufacturing
Laval, QC	Manufacturing
Prescott, ON	Distribution
USA	
Grand Rapids, MI	Center of Excellence
Dallas, TX	Distribution
Englewood, OH	Distribution
Huntsville, AL	Manufacturing & Distribution
Mira Loma, CA	Distribution
Nampa, ID	Manufacturing & Distribution
Turner Falls, MA	Manufacturing & Distribution
Vacaville, CA	Manufacturing
MEXICO	
Ojinaga, MX	Manufacturing
Mexicali, MX	Manufacturing

Corporate Headquarters:

Duravent Group  
 28 W. Adams, Suite 1810  
 Detroit, MI 48226  
 Tel: 800.835.4429  
 Email: [info@duraventgroup.com](mailto:info@duraventgroup.com)  
[www.duraventgroup.com](http://www.duraventgroup.com)

**duravent™**

**duravent™**  
GROUP

BUILD FOR THE FUTURE

[www.duraventgroup.com](http://www.duraventgroup.com)

