

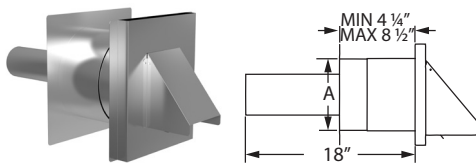
SUBJECT: New FasNSeal® Insulated Wall Thimble

DATE: May 9, 2022

PRODUCT: FasNSeal®

Duravent has released a new FasNSeal Insulated Wall Thimble. All existing wall thimbles will be replaced by the new insulated design to prevent cold air infiltration in both the single-wall and double-wall FasNSeal. These new insulated wall thimbles are available in 29-4C and 316L stainless steel pipe options in a diameter range of 3" - 16". New parts and order numbers are as follows:

Insulated Wall Thimble w/ Termination Damper

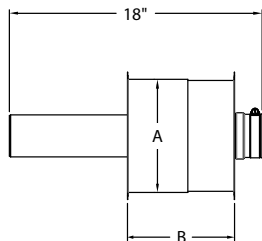
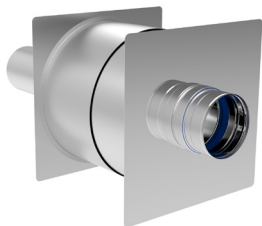


Use for horizontal through-the-wall terminations. Check installation instructions for restrictions on horizontal cap terminations, such as minimum distance from windows and doors. Accommodates wall thickness of 4 1/4" to 8 1/2". Damper prevents backdraft of cold air to appliance.

Available in 316L Stainless Steel

SIZE	ORDER #	STOCK #	A
3"	FSWTTI03	810016544	6"
4"	FSWTTI04	810016546	7"
5"	FSWTTI05	810016548	8"
6"	FSWTTI06	810016550	9"
8"	FSWTTI08	810016552	11"

Insulated Wall Thimble w/ AVL

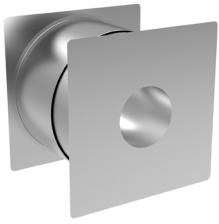


Use for through-the-wall termination. Fits between standard wall studs. 3"-5" diameters accommodate wall thickness of 4 1/4" to 8 1/2". 6"-16" diameters accommodate wall thickness of 5 3/4" to 11 1/2". AVL pipe allows for adjustability in length variance.

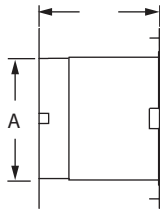
Available in 316L Stainless Steel

SIZE	ORDER #	STOCK #	A	B-MIN	B-MAX
3"	FSWTI03	810016484	8"	4.25"	8"
4"	FSWTI04	810016485	9"	4.25"	8.5"
5"	FSWTI05	810016486	10"	4.25"	8.5"
6"	FSWTI06	810016487	11"	5.75"	11.5"
7"	FSWTI07	810016488	12"	5.75"	11.5"
8"	FSWTI08	810016489	13"	5.75"	11.5"
9"	FSWTI09	810016490	14"	5.75"	11.5"
10"	FSWTI10	810016491	15"	5.75"	11.5"
12"	FSWTI12	810016492	17"	5.75"	11.5"
14"	FSWTI14	810016493	19"	5.75"	11.5"
16"	FSWTI16	810016494	21"	5.75"	11.5"

Insulated Wall Pass Through



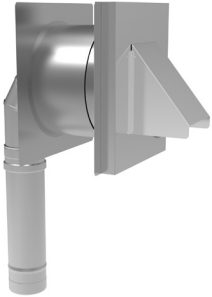
*MIN 4 1/4", MAX 8 1/2"
MIN 5 3/4", MAX 11 1/2"



Use for through-the-wall termination. Fits between standard wall studs. 3"-5" diameters accommodate wall thickness of 4 1/4" to 8 1/2". 6"-16" diameters accommodate wall thickness of 5 3/4" to 11 1/2".

SIZE	ORDER #	STOCK #	A	SIZE	ORDER #	STOCK #	A
3"	FSWPTI03	810016473	6"	9"	FSWPTI09	810016479	12"
4"	FSWPTI04	810016474	7"	10"	FSWPTI10	810016480	13"
5"	FSWPTI05	810016475	8"	12"	FSWPTI12	810016481	15"
6"	FSWPTI06	810016476	9"	14"	FSWPTI14	810016482	17"
7"	FSWPTI07	810016477	10"	16"	FSWPTI16	810016483	19"
8"	FSWPTI08	810016478	11"				

Standard Wall Mount Insulated Kit



Kit includes: Wall Thimble w/ Termination, Adjustable 90° Elbow, and Universal Appliance Adapter.

Use to vent wall mounted boilers or tankless water heaters. Terminates through-the-wall only. Available in 3", 4", and 5" vent diameters. Adjust vertically from 16 1/2" to 21" and horizontally from 8" to 12 1/2". 3" and 4" compatible with most gas-burning appliances. 5" compatible with tankless.

SIZE	ORDER #	STOCK #
3"	FSWMKI03	810016554
4"	FSWMKI04	810016555
5"	FSWMKI05	810003072

Severe Weather Wall-Mount Insulated Kit

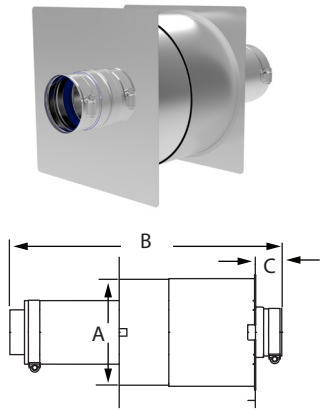


Kit includes: Wall Thimble w/ Termination Tee, Adjustable 90° Elbow, and Universal Appliance Adapter w/Condensate Drain and Back Draft Preventer.

Use to vent wall mounted boilers or tankless water heaters. Use in areas of extreme wet and cold weather. Designed to prevent appliance freeze-up while maintaining an obstruction free exhaust. Available in 4" vent diameters, compatible with most 4" exhaust gas appliances. Add a 90° Elbow and Vent Length on the outside of the house to clear high snow lines.

SIZE	ORDER #	STOCK #
4"	FSSWWMKI04	810016537

Insulated Wall Thimble w/ AVL



Use for through-the-wall termination. Fits between standard wall studs. 3"- 5" diameters accommodate wall thickness of 4 1/4" to 8 1/2". 6"- 16" diameters accommodate wall thickness of 5 3/4" to 11 1/2". AVL pipe allows for adjustability in length variance.

Available in 316L Stainless Steel

SIZE	ORDER #	AL29 STOCK #	A	B	C
3"	W2-WTI03	810016506	6"	18"	1 1/5"
4"	W2-WTI04	810016507	7"	18"	1 1/5"
5"	W2-WTI05	810016508	8"	18"	1 1/5"
6"	W2-WTI06	810016509	9"	18"	1 1/5"
7"	W2-WTI07	810016510	10"	18"	1 1/5"
8"	W2-WTI08	810016511	11"	18"	1 1/5"
9"	W2-WTI09	810016512	12"	18"	1 1/5"
10"	W2-WTI10	810016513	13"	18"	1 1/5"
12"	W2-WTI12	810016514	15"	18"	1 1/5"
14"	W2-WTI14	810016515	17"	18"	1 1/5"
16"	W2-WTI16	810016516	19"	18"	1 1/5"

Insulated 90° Bird Screen Wall Mount Kit

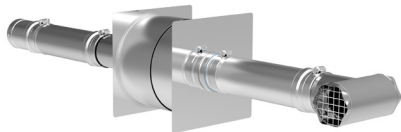


Kit includes: 90° Bird Screen Termination, Wall Thimble, Adjustable 90° Elbow, and Universal Appliance Adapter.

Use to vent wall mounted boilers or tankless water heaters. 3" kit adjusts vertically from 14 1/2" to 19" and horizontally from 9" to 13 1/2". 4" kit adjusts vertically from 14" to 18 1/2" and horizontally from 9" to 13 1/2". Compatible with all Rheem gas appliances. 3" kit requires a FSA-RI-4.2 Adapter.

SIZE	ORDER #	STOCK #
3"	FSWMEKI03	810016538
4"	FSWMEKI04	810016539

Ceiling Mounted Insulated Heater Vent Kit



Kit includes Termination Tee, Wall Thimble w/Adjustable Vent Length, (2) 12" Vent Lengths, and Universal Unit Heater Adapter.

NOTE: FSCMKI04CD includes Universal Appliance Adapter with Condensate Drain.

Kits Available in 316L Stainless Steel

Use to vent ceiling mounted heaters, through-the-wall termination only.

SIZE	ORDER #	STOCK #
3"	FSCMKI03	810016531
4"	FSCMKI04	810016533
4"	FSCMKI04CD	810016535

Please contact the DuraVent Customer Service Department at 1-800-835-4429 or customerservice@duravent.com with any questions.

duravent[™]
GROUP

© 2023 Duravent Group

Information published in all Duravent Group bulletins is current at time of publication and is subject to change without notice.