

## DuraConnect II Flexible Gas Vent Connector

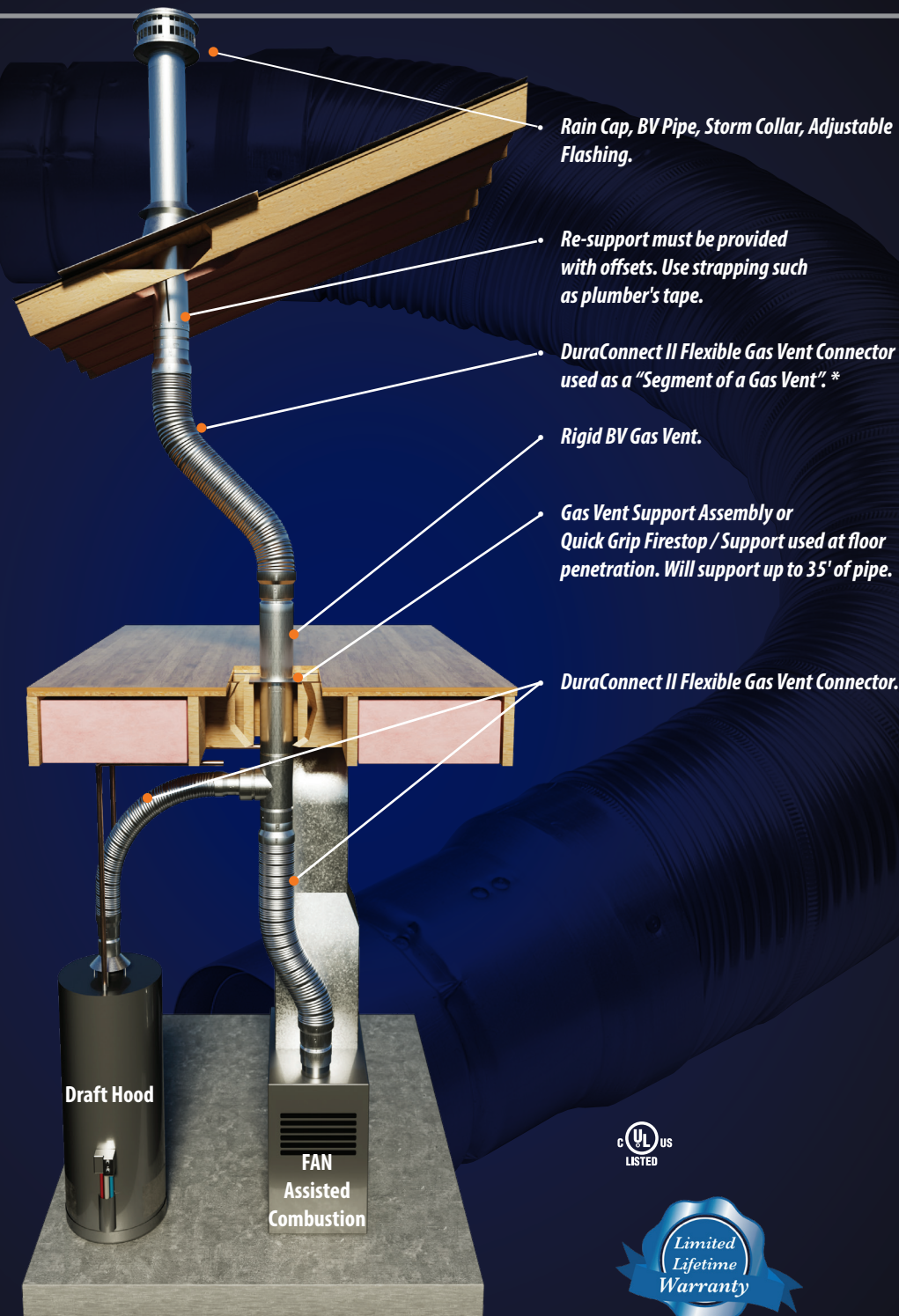
Plus - simplifies offsets between rigid sections of Type "B" gas vent systems.

### When it comes to venting gas, we wrote the book.

The DuraVent® DuraConnect II Double Wall Flexible Gas Vent Connector is available in 3", 4", & 5" diameters in 2', 3', 4', & 5' lengths designed for easy connection to standard rigid Type "B" Gas Vent. Our DuraConnect II is listed for use in the U.S. as a "segment" of an unenclosed Type "B" gas vent system and is fully safety certified for use in conditioned and/or unconditioned attics and crawl spaces. The DuraConnect II can simplify alignment of most installations by enabling a quick and easy offset between sections of rigid gas vent.\*

### DuraConnect II Flexible Connector features:

- Simple connection between appliance and Type "B" vents
- Added strength and durability due to double wall construction
- Comparable thermal insulating value to Type "B" vents
- DuraConnect II may be used where Type "B" gas vent connectors are required
- Replaces elbows & simplifies offsets
- Reduces condensation
- Safe and economical
- 1" clearance to combustibles



## Contact

### Professional Technical Help

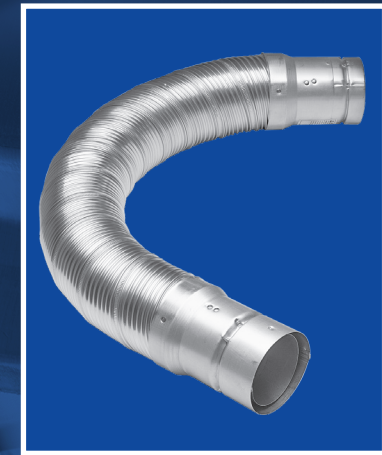
DuraVent prides itself on providing the best customer service and technical support in the industry.

Our Customer Support Team is available to answer technical questions.

Monday – Friday  
5:30am – 4pm Pacific | 8:30am – 7pm Eastern  
Tel: 800-835-4429  
Fax: 707-446-4740  
customerservice@duravent.com

# DuraVent®

800.835.4429 | 707.446.4740 Fax | www.duravent.com  
DCII\_Brochure\_06-2022\_V1



**DuraConnect II**  
DuraConnect II is safety certified for use in conditioned and/or unconditioned attics and crawl spaces.



# DOUBLE-WALL FLEXIBLE GAS VENT CONNECTOR

# DuraVent®

\* Except Canada. Please check your local building codes and refer to the installation instructions.



## DuraConnect II Flexible Gas Vent Connector

Plus - simplifies offsets between rigid sections of Type "B" gas vent systems.

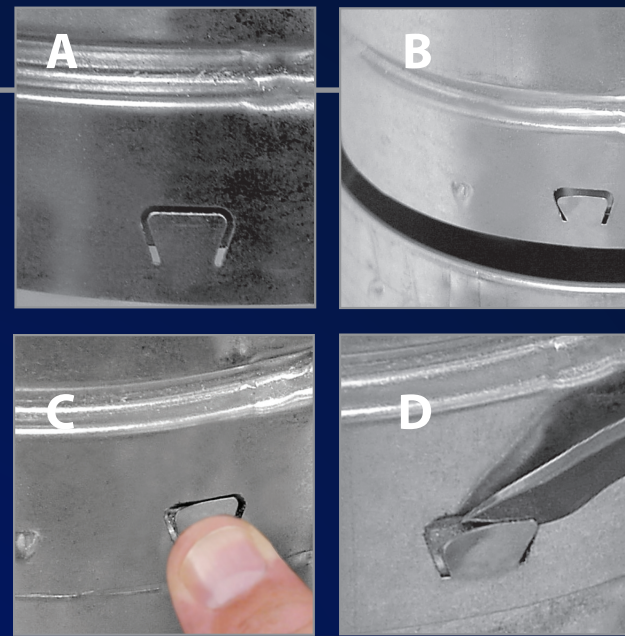


### DuraConnect II for gas burning appliances

Designed for use with listed gas-fired appliances equipped with draft hoods and other appliances listed for use with Type "B" gas vent. DuraConnect II is an air-insulated, double wall connector system with comparable insulating value to Type "B" gas vent. Double wall construction provides added strength and durability in addition to reducing the condensation potential.

### UL Listed

The DuraConnect II Connector is listed by Underwriters Laboratories (UL) for 1" airspace clearance to combustibles. DuraConnect II may be used where Type "B" gas vent connectors are required and may be sized in accordance with tables applicable to systems with Type "B" connectors. DuraConnect II is NOT designed to be enclosed or to pass through combustible ceilings, walls, roof joists, or floors.



Locks together with a snap, allowing you to engineer the perfect application.  
To disassemble - simply rotate the pipe, align the dimples, and pull apart.

### DuraTab Feature for DuraConnect II & BV Gas Vent

Our exclusive DuraTab® feature was developed as an alternative to the use of sheet metal screws to secure gas vent sections. In many areas of the U.S., the use of sheet metal screws is either a commonly accepted practice or a local requirement. The use of 1/4" sheet metal screws is expensive and time-consuming for installers. The use of our new DuraTab® feature gives installers the option of engaging this tab instead of using sheet metal screws.

To use the DuraTab® feature, BV/DuraConnect II Gas Vent sections are assembled in the usual manner, then the DuraTab® is depressed with a thumb or blunt object like a screwdriver into the lock channel of the male end of our pipe. To disengage the DuraTab®, pry it up using a screwdriver or knife blade.

The DuraTab® does not affect the functionality of our current BV/DuraConnect II lock system. The decision to use or not use the DuraTab® feature is totally optional.

### Simplifies Every Installation

This connector system eliminates the need for elbows and reduces height interference associated with rigid gas vent, greatly simplifying most gas appliance vent installations. Additionally, we have complete installation instructions detailing how to install your Model DuraConnect II. All of these publications are available on the web, at [www.duravent.com](http://www.duravent.com).



## QUICK, SAFE AND SECURE CONNECTIONS - EVERY TIME.

The DuraConnect II Double Wall Flexible Gas Vent Connector greatly simplifies most gas vent installations. DuraConnect II provides an economical alternative to making offsets between sections of rigid gas vent in Type "B" gas vent systems.



SIZE	LENGTH	ORDER #	STOCK #
3"	24"	3BV24DW	810018466
3"	36"	3BV36DW	810018467
3"	48"	3BV48DW	810018468
3"	60"	3BV60DW	810018469

SIZE	LENGTH	ORDER #	STOCK #
4"	24"	4BV24DW	810018470
4"	36"	4BV36DW	810018471
4"	48"	4BV48DW	810018472
4"	60"	4BV60DW	810018473

SIZE	LENGTH	ORDER #	STOCK #
5"	24"	5BV24DW	810018474
5"	36"	5BV36DW	810018475
5"	48"	5BV48DW	810018476
5"	60"	5BV60DW	810018477