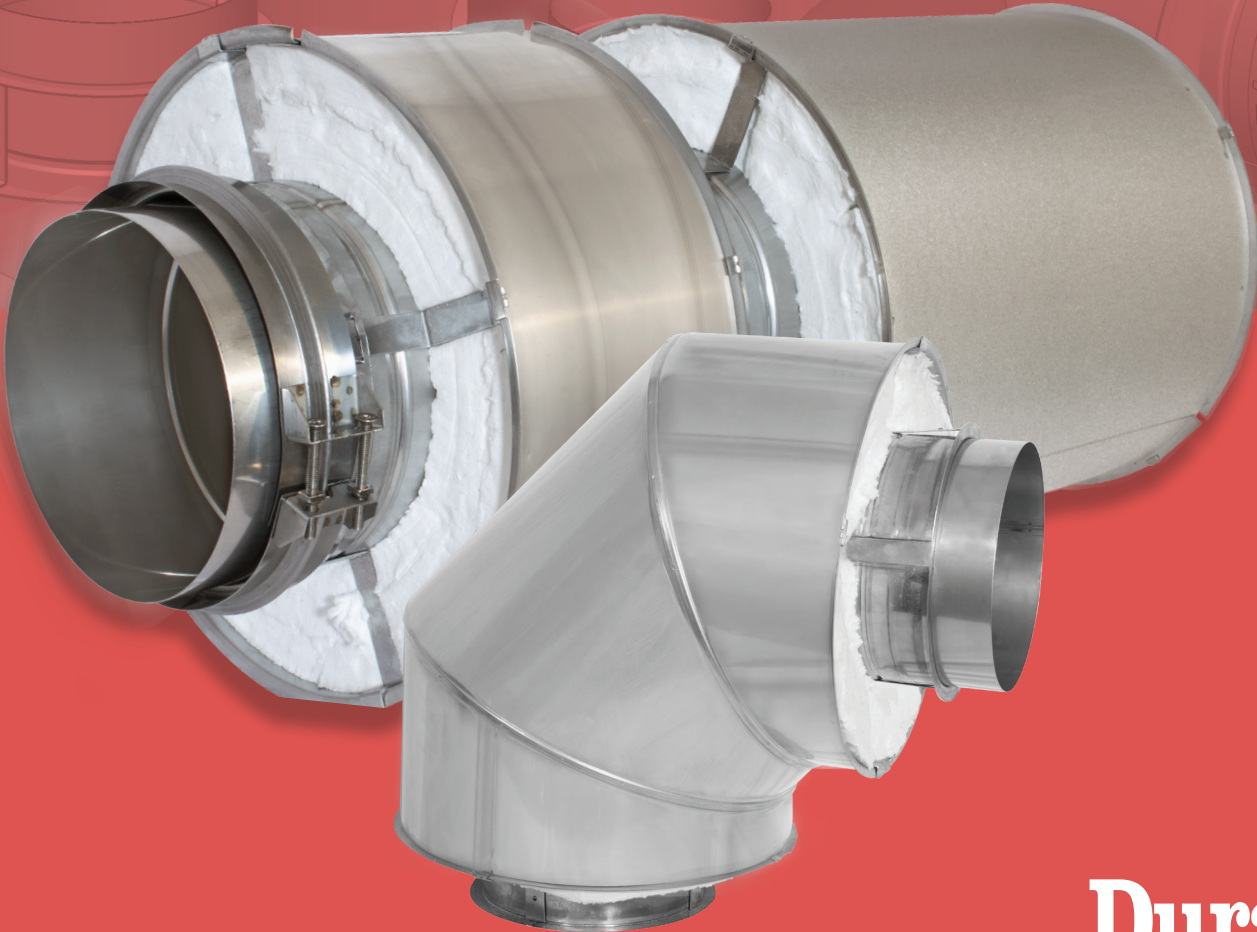


# DuraStack<sup>®</sup> Pro

## **DuraStack<sup>®</sup> Pro**

**Models DCL, DAS1, DIS1, DIS2, DIS4, and DIS3Z**

**Positive Pressure Chimney for Boiler Breeching & Stack,  
Engine Exhaust, and Grease Duct.**



**DuraVent<sup>®</sup>**

# DuraStack® Pro

Models DCL, DAS1, DIS1, DIS2, DIS4, and DIS3Z  
Positive Pressure Chimney for Boiler Breeching & Stack,  
Engine Exhaust, and Grease Duct.

## Applications

DuraStack Pro is available in the following configurations:

- DCL: Single Wall
- DAS1: 1" Air Insulated
- DIS1: 1" Insulated
- DIS2: 2" Insulated
- DIS4: 4" Insulated
- DIS3Z: 3" Insulated

Applications include: Low and High-Pressure Steam Boilers; Diesel and Turbine Exhaust; Building Heating Equipment. Industrial Furnaces; Processing Equipment; Kilns and Ovens; Grease Duct.

## Materials and Construction

### Inner Wall Material Thickness

- 5" - 18" .035" Laser welded, 304 or 316
- 20" - 36" .035" Plasma welded, 304 or 316

### Outer Wall Material Thickness

- 5" - 12" .024" Laser welded, 304, Galvalume
- 14" - 36" .024" Pittsburg Lock, 304, Galvalume

## Diameters

5"-36"

## Listings

### USA:

- UL 103 – Building Heating Appliance
- UL 103 (HT) – Standard for Factory-Built chimneys for residential type and building heating appliances
- UL 1978 – Standard for Grease Ducts
- UL 2221 – Standard for tests of fire resistive Grease Duct enclosure assemblies. DIS3Z only
- UL 2561 – Standard for 1400°F Factory-Built Chimneys. Excludes DIS3Z
- UL 1777 – Standard for Chimney Liners. DCL only.

### Canada:

- ULC/ORD C959 – Chimneys, Industrial 540°C and 760°C
- ULC S604 – Standard for Factory-Built Type A chimneys
- ULC S662 – Standard for Factory-Built Grease Duct
- ULC S635 – Standard for lining systems for existing masonry or Factory-Built chimneys and vents.

# DuraStack Pro®

