

# A Simple and Flexible Solution For Venting Multiple PolyPro Liners

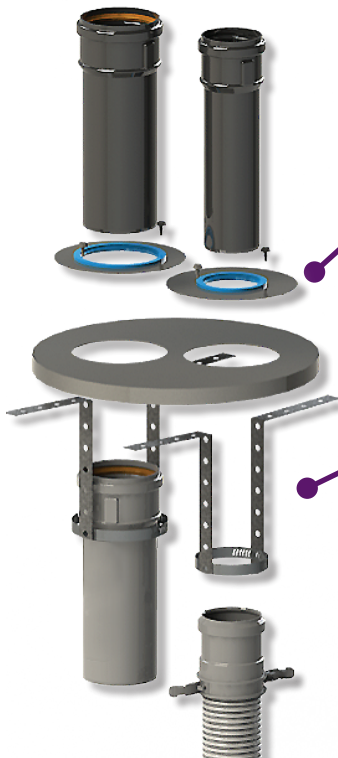
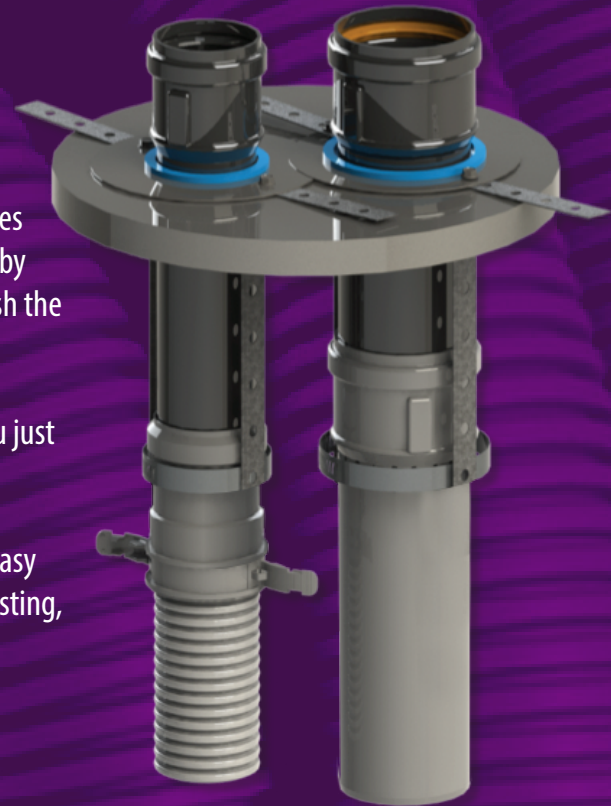
**Need to run multiple flexible liners in a single chimney or B Vent space? Do your installations have an endless variety of flue sizes and conduit sizes?**

DuraVent's new solution for venting multiple Polypro liners (flex or rigid) provides a simple and flexible solution. For support, DuraVent simplifies the installation by using a hose clamp and new reline hanger support. The reline upper plates finish the install and provide a water tight seal.

A great combination for two pipe venting systems for 90+ furnaces or when you just plain need to vent two or more appliances within the same space.

New reline allows for a liner for flue and a liner for combustion air, creating an easy conversion to black for exposed pipe. For specific installation guidance per our listing, please reference our installation instructions at [DuraVent.com](http://DuraVent.com)

All PolyPro terminations and components are listed.



## **Reline Upper Plate**

2PPS-RPU; 3PPS-RPU; 4PPS-RPU

Used to seal pipe penetration with gasket, plate needs to be silicone sealed and fastened to (field fabricated) support plate.

## **Reline Hanger Support**

PPS-RH

Universal for 2"-4" diameters. Used to support flex under the support plate. Clamps around the flex and is fastened to the support plate, then covered by the reline upper plate at the correct size.